

Product datasheet for **TP506270**

B4galt1 (NM_022305) Mouse Recombinant Protein

Product data:

Product Type:	Recombinant Proteins
Description:	Purified recombinant protein of Mouse UDP-Gal:betaGlcNAc beta 1,4- galactosyltransferase, polypeptide 1 (B4galt1), full length, with C-terminal MYC/DDK tag, expressed in HEK293T cells, 20ug
Species:	Mouse
Expression Host:	HEK293T
Expression cDNA Clone or AA Sequence:	>MR206270 protein sequence Red =Cloning site Green =Tags(s)
	<p>MRFREQFLGGSAAMPGATLQRACRLLVAVCALHLGVTLVYYLSGRDLSRLPQLVGVSSTLQGGTNGAAAS KQPPGEQRPRGARPPPPLGVSPKPRPGLDSSPGAASGPGLKSNLSSLPVPTTGLLSLPACPEESPLLVG PMLIDFNIAVDLELLAKKNPEIKTGGRYSPKDCVSPHKVAIIIPFRNRQEHLKYWLYYLHPILQRQQLDY GIYVINQAGDTMFNRKLLNIGFQEALKDYDYNCFVSDVDLIPMDDRNAYRCFSQPRHISVAMDKFGFS LPYVQYFGGVSALSQQFLAINGFPNNYWGWWGGEDDDIFNRLVHKGMSISRPNNAVVGRCRMRHRSRDKKN EPNPQRFDRIAHTKETMRFDGLNSLTYKVLVDVQRYPLYTQITVDIGTPR</p> <p>TRTRPLEQKLISEEDLAANDILDYKDDDDKV</p>
Tag:	Myc-DDK
Predicted MW:	44.4 kDa
Concentration:	>0.05 µg/µL as determined by microplate BCA method
Purity:	> 80% as determined by SDS-PAGE and Coomassie blue staining
Buffer:	25 mM Tris-HCl, 100 mM glycine, pH 7.3, 10% glycerol
Note:	For testing in cell culture applications, please filter before use. Note that you may experience some loss of protein during the filtration process.
Storage:	Store at -80°C after receiving vials.
Stability:	Stable for 12 months from the date of receipt of the product under proper storage and handling conditions. Avoid repeated freeze-thaw cycles.
RefSeq:	NP_071641
Locus ID:	14595



[View online »](#)

UniProt ID: [P15535](#), [Q3U478](#)

RefSeq Size: 4535

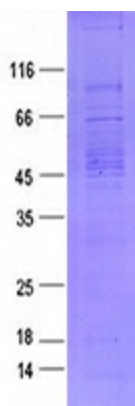
Cytogenetics: 4 20.46 cM

RefSeq ORF: 1200

Synonyms: 4-GalT; 4-GalT1; B-1; b4Gal-T1; beta-1; beta4Gal-T1; Ga; GalT; Ggtb; Ggtb2

Summary: This gene encodes two distinct enzyme isoforms, a long membrane-bound form and a short soluble form. These alternate isoforms are thought to be produced through alternative nested transcription initiation and different in-frame start codon usage. These enzymes catalyze the transfer of galactose to acceptor sugars, such as N-acetylglucosamine and glucose. The long form of this enzyme is localized to the trans-Golgi membrane and is involved in glycoconjugate biosynthesis. The short form functions in lactose biosynthesis through formation of a heterodimer with alpha-lactalbumin. [provided by RefSeq, Nov 2012]

Product images:



Coomassie blue staining of purified B4galt1 protein (Cat# TP506270). The protein was produced from HEK293T cells transfected with B4galt1 cDNA clone (Cat# [MR206270]) using MegaTran 2.0 (Cat# [TT210002]).