

## Product datasheet for **TP506011**

### **Dlk1 (NM\_010052) Mouse Recombinant Protein**

#### **Product data:**

**Product Type:** Recombinant Proteins  
**Description:** Purified recombinant protein of Mouse delta like non-canonical Notch ligand 1 (Dlk1), with C-terminal MYC/DDK tag, expressed in HEK293T cells, 20ug  
**Species:** Mouse  
**Expression Host:** HEK293T  
**Expression cDNA Clone or AA Sequence:** >MR206011 representing NM\_010052  
**Red**=Cloning site **Green**=Tags(s)

MIATGALLRVLLLLLAFGHSTYGAECDPPCDPQYGFCEADNVCRCRVGWEGPLCDKCVTAPGCVNGVCKE  
PWQCICKDGDGDKFCEIDVRACTSTPCANNGTCDVLEKQYECSTPGFSGKDCQHKAGPCVINGSPCQH  
GGACVDDEGQASHASCLCPPGFSGNFCEIVAATNSCTPNPCENDGVCTDIGGDFRCRCPAGFVDKTCRSP  
VSNCASGPCQNGGTCLQHTQVSFECLCKPPFMGPTCAKRRGASPVQVTHLPSGYGLTYRLTPGVHELPPVQ  
QPEQHILKVSMEKLNKSTPLLTEGQAICFTILGVLTSLVVLTVAIVFLNKCEWVSNLRYNHMLRKKKN  
LLLQYNSGEELAVNIIFPEKIDMTTFNKEAGDEEI

**TRTRPLEQKLISEEDLAANDILDYKDDDDKV**

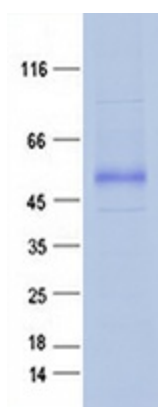
**Tag:** C-MYC/DDK  
**Predicted MW:** 41.8 kDa  
**Concentration:** >0.05 µg/µL as determined by microplate BCA method  
**Purity:** > 80% as determined by SDS-PAGE and Coomassie blue staining  
**Buffer:** 25 mM Tris-HCl, 100 mM glycine, pH 7.3, 10% glycerol  
**Note:** For testing in cell culture applications, please filter before use. Note that you may experience some loss of protein during the filtration process.  
**Storage:** Store at -80°C after receiving vials.  
**Stability:** Stable for 12 months from the date of receipt of the product under proper storage and handling conditions. Avoid repeated freeze-thaw cycles.  
**RefSeq:** [NP\\_034182](#)  
**Locus ID:** 13386  
**UniProt ID:** [Q09163](#), [Q925U3](#)



[View online »](#)

RefSeq Size:	1635
Cytogenetics:	12 60.17 cM
RefSeq ORF:	1155
Synonyms:	AW742678; DLK-1; Dlk1; FA1; Ly107; Peg9; pG2; pref-1; SCP1; ZOG
Summary:	May have a role in neuroendocrine differentiation. Inhibits adipocyte differentiation. [UniProtKB/Swiss-Prot Function]

### Product images:



Purified recombinant protein Dlk1 was analyzed by SDS-PAGE gel and Coomassie Blue Staining.