

Product datasheet for TP505942

Chil1 (NM_007695) Mouse Recombinant Protein

Product data:

Product Type:	Recombinant Proteins
Description:	Purified recombinant protein of Mouse chitinase-like 1 (Chil1), with C-terminal MYC/DDK tag, expressed in HEK293T cells, 20ug
Species:	Mouse
Expression Host:	HEK293T
Expression cDNA Clone or AA Sequence:	>MR205942 protein sequence Red =Cloning site Green =Tags(s)
	MGMRAALTGFAVLMMLQSCSAYKLVCFYTSWSQYREGVGSFLPDAIQPFLCTHIIYSFANISSDNMLSTW EWNDESNYDKLNKLRNTNLKTLISVGGWKFGEKRFSEIASNTERRTAFVRSVAPFLRSYGFDDLAW LYPRLRDQYFSTLIKELNAEFTKEVQPGREKLLLSAALSAGKVAIDTGYDIAQIAQHLDLFINLMTYDFH GVWRQITGHHSPFLFQGQKDFRDRYSNVNYAVQYMIRLGAQASKLLMGIPTFGKSFTLASSENQLGAPIS GEGLPGRFTKEAGTLAYYEICDFLKGAEVHRLSNEKVPFATKGNQWVGVEDKESVKNKVGFLKEKKLAGA MVWALDLDDFQGTCPKEFFPLTNAIKDALA
	TRTRPLEQKLISEEDLAANDILDYKDDDDKV
Tag:	C-MYC/DDK
Predicted MW:	43 kDa
Concentration:	>0.05 µg/µL as determined by microplate BCA method
Purity:	> 80% as determined by SDS-PAGE and Coomassie blue staining
Buffer:	25 mM Tris-HCl, 100 mM glycine, pH 7.3, 10% glycerol
Note:	For testing in cell culture applications, please filter before use. Note that you may experience some loss of protein during the filtration process.
Storage:	Store at -80°C after receiving vials.
Stability:	Stable for 12 months from the date of receipt of the product under proper storage and handling conditions. Avoid repeated freeze-thaw cycles.
RefSeq:	NP_031721
Locus ID:	12654
UniProt ID:	Q61362

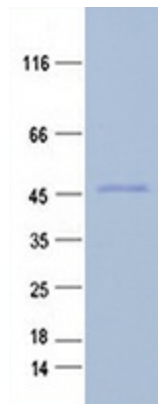


[View online »](#)

RefSeq Size:	1704
Cytogenetics:	1 58.15 cM
RefSeq ORF:	1146
Synonyms:	AW208766; Brp39; Chi3l1; Gp39

Summary: Carbohydrate-binding lectin with a preference for chitin. Has no chitinase activity. May play a role in tissue remodeling and in the capacity of cells to respond to and cope with changes in their environment. Plays a role in T-helper cell type 2 (Th2) inflammatory response and IL-13-induced inflammation, regulating allergen sensitization, inflammatory cell apoptosis, dendritic cell accumulation and M2 macrophage differentiation. Facilitates invasion of pathogenic enteric bacteria into colonic mucosa and lymphoid organs. Mediates activation of AKT1 signaling pathway and subsequent IL8 production in colonic epithelial cells. Regulates antibacterial responses in lung by contributing to macrophage bacterial killing, controlling bacterial dissemination and augmenting host tolerance. Also regulates hyperoxia-induced injury, inflammation and epithelial apoptosis in lung.[UniProtKB/Swiss-Prot Function]

Product images:



Purified recombinant protein Chil1 was analyzed by SDS-PAGE gel and Coomassie Blue Staining.