

## Product datasheet for **TP504896**

### **Npdc1 (NM\_008721) Mouse Recombinant Protein**

#### **Product data:**

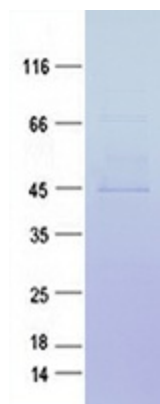
<b>Product Type:</b>	Recombinant Proteins
<b>Description:</b>	Purified recombinant protein of Mouse neural proliferation, differentiation and control 1 (Npdc1), with C-terminal MYC/DDK tag, expressed in HEK293T cells, 20ug
<b>Species:</b>	Mouse
<b>Expression Host:</b>	HEK293T
<b>Expression cDNA Clone or AA Sequence:</b>	>MR204896 protein sequence <b>Red</b> =Cloning site <b>Green</b> =Tags(s)  MATPVPPSPRHLRLLRLLSGLILGAALNGATARRPDATTCPGSLDCALKRRAKCPPGAHACGPCLQSF QEDQRGFCVPRKHLSSGEGLPQPRLEEEIDSLAQELALKEKEAGHSRLTAQPLLEAAQKLEPAATLGFS QWGQRLEPGLPSTHGTSSPIPHTLSRSSRASSGPVQMSPLEPQGRHGNLTLVLILAFCLASSAALAVAAL CWCRQLQREIRLTQKADYAATAKGPTSPSTPRISPGDQRLAHSAAEMHYQHQRQQMLCLERHKEPPKELES ASSDEENEDGDFTVYECPLAPTGEMEVNRNPLFDHSTLSAPVPGPHSLPPLQ  <b>TRTRPLEQKLISEEDLAANDILDYKDDDDKV</b>
<b>Tag:</b>	C-MYC/DDK
<b>Predicted MW:</b>	35.7 kDa
<b>Concentration:</b>	>0.05 µg/µL as determined by microplate BCA method
<b>Purity:</b>	> 80% as determined by SDS-PAGE and Coomassie blue staining
<b>Buffer:</b>	25 mM Tris-HCl, 100 mM glycine, pH 7.3, 10% glycerol
<b>Note:</b>	For testing in cell culture applications, please filter before use. Note that you may experience some loss of protein during the filtration process.
<b>Storage:</b>	Store at -80°C after receiving vials.
<b>Stability:</b>	Stable for 12 months from the date of receipt of the product under proper storage and handling conditions. Avoid repeated freeze-thaw cycles.
<b>RefSeq:</b>	<a href="#">NP_032747</a>
<b>Locus ID:</b>	18146
<b>UniProt ID:</b>	<a href="#">Q64322</a>



[View online »](#)

RefSeq Size:	1522
Cytogenetics:	2 A3
RefSeq ORF:	999
Synonyms:	AI314472; NPDC-1
Summary:	Suppresses oncogenic transformation in neural and non-neural cells and down-regulates neural cell proliferation. Might be involved in transcriptional regulation.[UniProtKB/Swiss-Prot Function]

### Product images:



Purified recombinant protein Npdc1 was analyzed by SDS-PAGE gel and Coomassie Blue Staining.