

Product datasheet for **TP501870**

Rhoa (NM_016802) Mouse Recombinant Protein

Product data:

Product Type:	Recombinant Proteins
Description:	Purified recombinant protein of Mouse ras homolog family member A (Rhoa), with C-terminal MYC/DDK tag, expressed in HEK293T cells, 20ug
Species:	Mouse
Expression Host:	HEK293T
Expression cDNA Clone or AA Sequence:	>MR201870 representing NM_016802 Red =Cloning site Green =Tags(s)
	 MAAIRKKLVIVGDGACGKTCLLIVFSKDQFPEVYVPTVFENYVADIEVDGKQVELALWDTAGQEDYDRLR PLSYPDTDVILMCFSIDSPDSLENIPEKWTPEVKHFPCNPVPIILVGNKKDLRNDEHTRRELAKMKQEPVK PEEGRDMANRIGAFGYMECSAKTKDGVREVFEMATRAALQARRGKKKSGCLIL TRTRPLEQKLISEEDLAANDILDYKDDDDKV
Tag:	C-MYC/DDK
Predicted MW:	22.2 kDa
Concentration:	>0.05 µg/µL as determined by microplate BCA method
Purity:	> 80% as determined by SDS-PAGE and Coomassie blue staining
Buffer:	25 mM Tris-HCl, 100 mM glycine, pH 7.3, 10% glycerol
Note:	For testing in cell culture applications, please filter before use. Note that you may experience some loss of protein during the filtration process.
Storage:	Store at -80°C after receiving vials.
Stability:	Stable for 12 months from the date of receipt of the product under proper storage and handling conditions. Avoid repeated freeze-thaw cycles.
RefSeq:	<u>NP_058082</u>
Locus ID:	11848
UniProt ID:	<u>Q9QUI0</u> , <u>Q4VAE6</u>
RefSeq Size:	2126
Cytogenetics:	9 F2



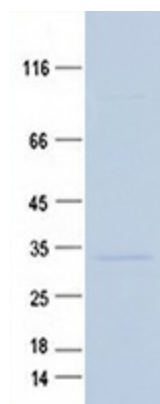
[View online »](#)

RefSeq ORF: 579

Synonyms: A; Ar; Arha; Arha1; Arha2; R

Summary: This gene encodes a member of the Rho family of small GTPases, which cycle between inactive GDP-bound and active GTP-bound states and function as molecular switches in signal transduction cascades. Rho proteins promote reorganization of the actin cytoskeleton and regulate cell shape, attachment, and motility. Overexpression of this gene is associated with tumor cell proliferation and metastasis. Multiple alternatively spliced variants have been identified. [provided by RefSeq, Sep 2015]

Product images:



Purified recombinant protein Rhoa was analyzed by SDS-PAGE gel and Coomassie Blue Staining.