

## Product datasheet for **TP331205**

### ARPIN-AP3S2 (NM\_001199058) Human Recombinant Protein

#### Product data:

Product Type:	Recombinant Proteins
Description:	Recombinant protein of human C15orf38-AP3S2 readthrough (C15orf38-AP3S2), 20 µg
Species:	Human
Expression Host:	HEK293T
Expression cDNA Clone or AA Sequence:	>RC231205 representing NM_001199058 <b>Red</b> =Cloning site <b>Green</b> =Tags(s)

MSRIYHDGALRNKAVQSVRLPGAWDPAAHQGGNGVLLEGELIDVSRHSILDTHGRKERYVLYIRPSHIH  
RRKFDKAGNEIEPNFSATRKVNTGFLMSSYKVEAKGDTDRLTPEALKGLVKNPELLALTESLTPDHTVAF  
WMPESMEVMELELGAGVRLKTRGDGPFLDSLAKLEAGTVTKCNFTGDGKTGASWTDNIMAQKCSKGAAA  
EIREQGDGAEDEEWPEEIQQQIVRETFHLVLRDDNICNFLEGGSLIGGSDYKLIYRHYATLYFVFCVDS  
SESELGILDLIQVFVETLDKCFENVCELDFIHMDKVHYILQEVVMGGMVLETNMNEIVAQIEAQRNLEK  
SEGGLSAAPARAVSAVKNNINLPEIPRNINIGDLNIKVPNLSQFV

**TRTRPLEQKLISEEDLAANDILDYKDDDDKV**

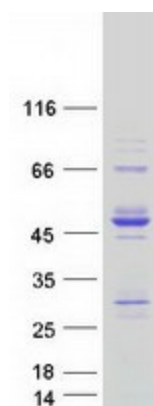
Tag:	C-Myc/DDK
Predicted MW:	44.3
Concentration:	>0.05 µg/µL as determined by microplate BCA method
Purity:	> 80% as determined by SDS-PAGE and Coomassie blue staining
Buffer:	25 mM Tris-HCl, 100 mM glycine, pH 7.3, 10% glycerol
Preparation:	Recombinant protein was captured through anti-DDK affinity column followed by conventional chromatography steps.
Note:	For testing in cell culture applications, please filter before use. Note that you may experience some loss of protein during the filtration process.
Storage:	Store at -80°C.
Stability:	Stable for 12 months from the date of receipt of the product under proper storage and handling conditions. Avoid repeated freeze-thaw cycles.
RefSeq:	<a href="#">NP_001185987</a>
Locus ID:	100526783



[View online »](#)

UniProt ID:	<a href="#">A0A0A6YYH1</a>
Cytogenetics:	15q26.1
RefSeq ORF:	1182
Synonyms:	ARPIN; C15orf38; C15orf38-AP3S2
Summary:	This locus represents naturally occurring read-through transcription between the neighboring C15orf38 (chromosome 15 open reading frame 38) and AP3S2 (adaptor-related protein complex 3, sigma 2 subunit) genes. The read-through transcript encodes a fusion protein that shares sequence identity with each individual gene product. [provided by RefSeq, Nov 2010]

### Product images:



Coomassie blue staining of purified ARPIN-AP3S2 protein (Cat# TP331205). The protein was produced from HEK293T cells transfected with ARPIN-AP3S2 cDNA clone (Cat# [RC231205]) using MegaTran 2.0 (Cat# [TT210002]).