

Product datasheet for **TP331127M**

CD1E (NM_001185115) Human Recombinant Protein

Product data:

Product Type:	Recombinant Proteins
Description:	Recombinant protein of human CD1e molecule (CD1E), transcript variant 8, 100 µg
Species:	Human
Expression Host:	HEK293T
Expression cDNA	>RC231127 representing NM_001185115
Clone or AA Sequence:	Red=Cloning site Green=Tags(s)

MLLLFLLFEGLCPCGENTAAPQALQSYHLAAEEQLSFRMLQTSSFANHSWAHSESGSWLGLDLQTHGWDTV
LGTIRFLKPWSHGNSKQELKNLQSLFQLYFHSFIQIVQASAGQFQLELKPEAWLSCGPSPGPGRLQLVC
HVSGFYKPKPVWMMWRGEQEQRGTQRGDVLPNADETWYLRATLDVAAGEAAGLSCRVKHSSLGGHDLIIH
WGGYSIFLILICTVIVTLVILVVDSRLKKQSPVFLMGANTQDTKNSRHQFCLAQVSWIKNRVLKWKWT
RLNQLW

TRTRPLEQKLISEEDLAANDILDYKDDDDKV

Tag:	C-Myc/DDK
Predicted MW:	32.7
Concentration:	>0.05 µg/µL as determined by microplate BCA method
Purity:	> 80% as determined by SDS-PAGE and Coomassie blue staining
Buffer:	25 mM Tris-HCl, 100 mM glycine, pH 7.3, 10% glycerol
Preparation:	NULL or Add: Recombinant proteins was captured through anti-DDK affinity column followed by conventional chromatography steps.
Note:	For testing in cell culture applications, please filter before use. Note that you may experience some loss of protein during the filtration process.
Storage:	Store at -80°C.
Stability:	Stable for 12 months from the date of receipt of the product under proper storage and handling conditions. Avoid repeated freeze-thaw cycles.
RefSeq:	NP_001172044
Locus ID:	913



[View online »](#)

UniProt ID: [P15812](#), [A2RRL5](#)

Cytogenetics: 1q23.1

RefSeq ORF: 858

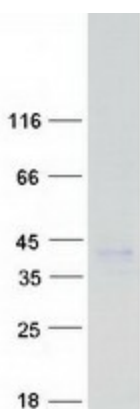
Synonyms: CD1A; R2

Summary: This gene encodes a member of the CD1 family of transmembrane glycoproteins, which are structurally related to the major histocompatibility complex (MHC) proteins and form heterodimers with beta-2-microglobulin. The CD1 proteins mediate the presentation of primarily lipid and glycolipid antigens of self or microbial origin to T cells. The human genome contains five CD1 family genes organized in a cluster on chromosome 1. The CD1 family members are thought to differ in their cellular localization and specificity for particular lipid ligands. The protein encoded by this gene localizes within Golgi compartments, endosomes, and lysosomes, and is cleaved into a stable soluble form. The soluble form is required for the intracellular processing of some glycolipids into a form that can be presented by other CD1 family members. Many alternatively spliced transcript variants encoding different isoforms have been described. Additional transcript variants have been found; however, their biological validity has not been determined. [provided by RefSeq, Jun 2010]

Protein Families: Druggable Genome, Transmembrane

Protein Pathways: Hematopoietic cell lineage

Product images:



Coomassie blue staining of purified CD1E protein (Cat# [TP331127]). The protein was produced from HEK293T cells transfected with CD1E cDNA clone (Cat# [RC231127]) using MegaTran 2.0 (Cat# [TT210002]).