

## Product datasheet for **TP331066**

### CLDN24 (NM\_001185149) Human Recombinant Protein

#### Product data:

Product Type:	Recombinant Proteins
Description:	Recombinant protein of human claudin 24 (CLDN24), 20 µg
Species:	Human
Expression Host:	HEK293T
Expression cDNA Clone or AA Sequence:	>RC231066 representing NM_001185149 <b>Red</b> =Cloning site <b>Green</b> =Tags(s)
	 MALIFRTAMQSVGLLLSLLGWILSIITTYLPHWKNLNLDLNEMENWTMGLWQTCVIEEVGMQCKDFDSF LALPAELRVSRILMFLSNGLGFLGLLVSGFGLDCLRIGESQRDLKRRLLILGGILSWASGITALVPVSWV AHKTVQEFWDENVPDFVPRWEFGAFLGWFAGLSLLGGCLLNCAACSSHAPLALGHYAVAQMQTQCPY LEDGTADPQV  <b>TR</b> TRPLE <b>QKLISEEDLAANDILDYKDDDDKV</b>
Tag:	C-Myc/DDK
Predicted MW:	24.9
Concentration:	>0.05 µg/µL as determined by microplate BCA method
Purity:	> 80% as determined by SDS-PAGE and Coomassie blue staining
Buffer:	25 mM Tris-HCl, 100 mM glycine, pH 7.3, 10% glycerol
Preparation:	Recombinant protein was captured through anti-DDK affinity column followed by conventional chromatography steps.
Note:	For testing in cell culture applications, please filter before use. Note that you may experience some loss of protein during the filtration process.
Storage:	Store at -80°C.
Stability:	Stable for 12 months from the date of receipt of the product under proper storage and handling conditions. Avoid repeated freeze-thaw cycles.
RefSeq:	<u><a href="#">NP_001172078</a></u>
Locus ID:	100132463
UniProt ID:	<u><a href="#">A6NM45</a></u>



[View online »](#)

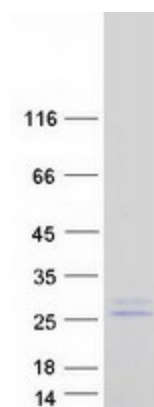
**Cytogenetics:** 4q35.1

**RefSeq ORF:** 660

**Synonyms:** CLDN21

**Summary:** This gene encodes a member of the claudin family. Claudins are integral membrane proteins and components of tight junction strands. Tight junction strands serve as a physical barrier to prevent solutes and water from passing freely through the paracellular space between epithelial or endothelial cell sheets, and also play critical roles in maintaining cell polarity and signal transductions. The protein encoded by this gene is 75% identical to the mouse homolog. This gene is upstream of the CLDN22 gene, which overlaps the WWC2 gene on the opposite strand in the genome.[provided by RefSeq, Aug 2010]

### Product images:



Coomassie blue staining of purified CLDN24 protein (Cat# TP331066). The protein was produced from HEK293T cells transfected with CLDN24 cDNA clone (Cat# [RC231066]) using MegaTran 2.0 (Cat# [TT210002]).