

## Product datasheet for TP331062

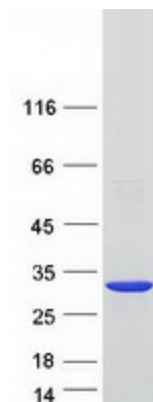
### GIMD1 (NM\_001195138) Human Recombinant Protein

#### Product data:

Product Type:	Recombinant Proteins
Description:	Recombinant protein of human GTPase IMAP family member-like (LOC100507096), 20 µg
Species:	Human
Expression Host:	HEK293T
Expression cDNA Clone or AA Sequence:	>RC231062 representing NM_001195138 <span style="color: red;">Red</span> =Cloning site <span style="color: green;">Green</span> =Tags(s)  MTDPNKMIINLALFGMTQSGKSSAGNILLGSTDFHSSFAPCSVTCCSLGRSCHLHFSMRRGGLEVALQV QVLDTPGYPHSRLSKKYVKQEVKEALAHFQGGLHLALLVQRADVPFCGQEVTDVPVQMIQELLGHAW MN YTAILFTHAEKIEEAGLTEDKYLHEASDTLKTLLNSIQHKYVFQYKKGKSLNEQRMKILERIMEFIKENC YQVLTFK  <span style="color: red;">TR</span> <span style="color: green;">TRPLEQKLISEEDLAANDILDYKDDDDKV</span>
Tag:	C-Myc/DDK
Predicted MW:	24.9
Concentration:	>0.05 µg/µL as determined by microplate BCA method
Purity:	> 80% as determined by SDS-PAGE and Coomassie blue staining
Buffer:	25 mM Tris-HCl, 100 mM glycine, pH 7.3, 10% glycerol
Preparation:	Recombinant protein was captured through anti-DDK affinity column followed by conventional chromatography steps.
Note:	For testing in cell culture applications, please filter before use. Note that you may experience some loss of protein during the filtration process.
Storage:	Store at -80°C.
Stability:	Stable for 12 months from the date of receipt of the product under proper storage and handling conditions. Avoid repeated freeze-thaw cycles.
RefSeq:	<u><a href="#">NP_001182067</a></u>
Locus ID:	100507096


[View online »](#)

UniProt ID: P0DJR0  
 Cytogenetics: 4q24  
 RefSeq ORF: 651

**Product images:**


Coomassie blue staining of purified GIMD1 protein (Cat# TP331062). The protein was produced from HEK293T cells transfected with GIMD1 cDNA clone (Cat# [RC231062]) using MegaTran 2.0 (Cat# [TT210002]).