

## Product datasheet for **TP330990M**

### **BCL7B (NM\_001197244) Human Recombinant Protein**

#### Product data:

Product Type:	Recombinant Proteins
Description:	Purified recombinant protein of Homo sapiens B-cell CLL/lymphoma 7B (BCL7B), transcript variant 2, 100 µg
Species:	Human
Expression Host:	HEK293T
Expression cDNA Clone or AA Sequence:	>RC230990 representing NM_001197244 <b>Red</b> =Cloning site <b>Green</b> =Tags(s)  MSGRSVRAETRSRAKDDIKKVMMAAIEKVRKWEKKWVTVGDTSRIFKWWPVTDSKEKEKSKSNSSAAREP NGFPSDASANSSLLLEFQEPSLPSEVADEPPTLTKEEPVPLETQVVEEEDSGAPPLKRFCDVQPTVPQ TASES  <b>TRTRPLEQKLISEEDLAANDILDYKDDDDKV</b>
Tag:	C-Myc/DDK
Predicted MW:	16.5
Concentration:	>0.05 µg/µL as determined by microplate BCA method
Purity:	> 80% as determined by SDS-PAGE and Coomassie blue staining
Buffer:	25 mM Tris-HCl, 100 mM glycine, pH 7.3, 10% glycerol
Preparation:	NULL or Add: Recombinant proteins was captured through anti-DDK affinity column followed by conventional chromatography steps.
Note:	For testing in cell culture applications, please filter before use. Note that you may experience some loss of protein during the filtration process.
Storage:	Store at -80°C.
Stability:	Stable for 12 months from the date of receipt of the product under proper storage and handling conditions. Avoid repeated freeze-thaw cycles.
RefSeq:	<a href="#">NP_001184173</a>
Locus ID:	9275
UniProt ID:	<a href="#">Q9BQE9</a>



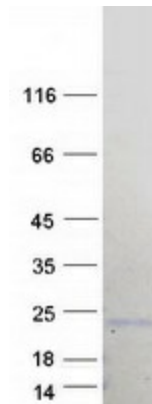
[View online »](#)

Cytogenetics: 7q11.23

RefSeq ORF: 435

**Summary:** This gene encodes a member of the BCL7 family including BCL7A, BCL7B and BCL7C proteins. This member is BCL7B, which contains a region that is highly similar to the N-terminal segment of BCL7A or BCL7C proteins. The BCL7A protein is encoded by the gene known to be directly involved in a three-way gene translocation in a Burkitt lymphoma cell line. This gene is located at a chromosomal region commonly deleted in Williams syndrome. This gene is highly conserved from *C. elegans* to human. Multiple alternatively spliced transcript variants have been found for this gene. [provided by RefSeq, Oct 2010]

### Product images:



Coomassie blue staining of purified BCL7B protein (Cat# [TP330990]). The protein was produced from HEK293T cells transfected with BCL7B cDNA clone (Cat# [RC230990]) using MegaTran 2.0 (Cat# [TT210002]).