

Product datasheet for TP330622L

SEZ6L (NM_001184773) Human Recombinant Protein

Product data:

Product Type:	Recombinant Proteins
Description:	Recombinant protein of human seizure related 6 homolog (mouse)-like (SEZ6L), transcript variant 2, 1 mg
Species:	Human
Expression Host:	HEK293T
Expression cDNA Clone or AA Sequence:	>RC230622 representing NM_001184773 Red=Cloning site Green=Tags(s)

MPAARPPAAGLRGISLFLALLLGSPAAALERDALPEGDASPLGPYLLPSGAPERGSPGKEHPEERWVTAP
PSSSQSAEVLGELVLDGTAPSAHHDIPALSPLLPEEARPKHALPPKKKLSLKQVNSARKQLRPKATSAA
TVQRAGSQPASQGLDLLSSSTEKPGPPGDPDIVASEEASEVPLWDRKESAVPTTPAPLQISPFTSQPY
VAHTLPQRPEPGEPGDMAQEAPQEDTSPMALMDKGENELTGSASEESQETTTSTIITTTVITTEQAPAL
CSVSFSNPEGYIDSSDYPLLPLNNFLECTYNVTVYTYGVVELQVKSVDLSGELLSIRGVDGPTLTVLAN
QTLLVEGQVIRSPTNTISVYFRFTFQDDGLGTFQLHYQAFMLSCNFRPRPDSGDVTVMDLHSGGVAHFHCH
LGVELQGAKILTCINASKPHWSSQEPICSAPCGGAVHNATIGRVLSPSPENTNGSQFCIWTIEAPEGQK
LHLHFERLLLHDKDRMTVHSGQTNKSALLYDSLQTESVPEGLLSEGNTIRIEFTSDQARAASTFNIRFE
AFEKGHCYEPYIQNGNFTTSDPTYNIGTIVEFTCDPGHSLEQGPAAIECINVRDPYWNDTEPLCRAMCGG
ELSAVAGVWVLSPNWPEPYVEGEDCIWKIHVGEEKRIFLDIQFLNLSNSDILTIYDGDVMPHILGQYLGN
SGPQKLYSSTPDLTIQFHSDPAGLIFGKGQGFIMNYIEVSRNDSKSDLPEIQNGWKTTSHTELVRGARIT
YQCDPGYDIVGSDTLTCQWDLWSWSDPPFCEKIMYCTDPGEVDHSTR LISDPVLLVGTTIQYTCNPGFVL
EGSLLTCYSRETGTPIWTSRLPHCVSEESLACDNPLPENGYQILYKRLYLPGESLTFMICYEGFELMGE
VTIRCILGQPSHWNGPLPVCKVNQDSFEHALEVAEAAAETSLEGGNMALAFIPVLIISLLLGAYIYT
RCRYYSNLRPLMYSHPYSQITVETEFDNPIYETGETREYEVSI

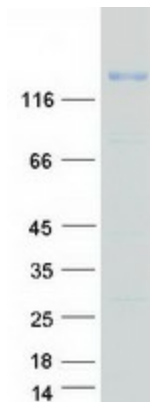
TRTRPLEQKLISEEDLAANDILDYKDDDDKV

Tag:	C-Myc/DDK
Predicted MW:	112.1
Concentration:	>0.05 µg/µL as determined by microplate BCA method
Purity:	> 80% as determined by SDS-PAGE and Coomassie blue staining
Buffer:	25 mM Tris-HCl, 100 mM glycine, pH 7.3, 10% glycerol



[View online »](#)

Preparation:	NULL or Add: Recombinant proteins was captured through anti-DDK affinity column followed by conventional chromatography steps.
Note:	For testing in cell culture applications, please filter before use. Note that you may experience some loss of protein during the filtration process.
Storage:	Store at -80°C.
Stability:	Stable for 12 months from the date of receipt of the product under proper storage and handling conditions. Avoid repeated freeze-thaw cycles.
RefSeq:	NP_001171702
Locus ID:	23544
UniProt ID:	Q9BYH1
Cytogenetics:	22q12.1
RefSeq ORF:	3072
Summary:	May contribute to specialized endoplasmic reticulum functions in neurons.[UniProtKB/Swiss-Prot Function]
Protein Families:	Druggable Genome, Transmembrane

Product images:

Coomassie blue staining of purified SEZ6L protein (Cat# [TP330622]). The protein was produced from HEK293T cells transfected with SEZ6L cDNA clone (Cat# [RC230622]) using MegaTran 2.0 (Cat# [TT210002]).