

## Product datasheet for **TP330581M**

### MAN1 (LEMD3) (NM\_001167614) Human Recombinant Protein

#### Product data:

Product Type:	Recombinant Proteins
Description:	Recombinant protein of human LEM domain containing 3 (LEMD3), transcript variant 2, 100 µg
Species:	Human
Expression Host:	HEK293T
Expression cDNA Clone or AA Sequence:	>RC230581 representing NM_001167614 <b>Red</b> =Cloning site <b>Green</b> =Tags(s)

MAAAAASAPQQLSDEELFSQLRRYGLSPGPVTESTRPVYLKLLKLRREEEQQHRSRGGRGNKTRNSNNNN  
TAAATVAAAGPAAAAAAGMGVRPVSGDLSYLRTPGGLCRISASGPESLLGGPGGASAAPAAGSKVLLGFS  
SDESDVEASPRDQAGGGGRKDRASLQYRGLKAPPAPLAASEVTNSNSAERRKPHSWWGARRPAGPELQTP  
PGKDGAVEDEEGEGEDGEERDPETEELWASRTVNGSRLVPYSCRENYSDSEEDDDDVASSRQVLKDDS  
LSRHRPRRTHSKPLPPLTAKSAGGRLETSVQGGGGLAMNDRAAAAAGSLDRSRNLEAAAAEQGGGCDQVD  
SSVPVRYRVNAKLTPLLPPPLTDMSTLDSSTGSLKTNNHIGGGAFSVDSPRIYSNSLPPSAAVAASS  
SLRINHANHTGSNHTYLKNTYNKPKLSEPEEELLQQFKREEVSPTGFSFAHYLSMFLLTAACLFFLILGL  
TYLGMRGTGVS EDGELSKNPFGETFGKIQESEKTLMMNTLYKLHDRLAQLAGDHECGSSSQRTLSVQEAA  
AYLKDLGPEYEGIFNTSLQWILENGKDVGIRCVGFGPEEELTNITDVQFLQSTRPLMSFWCRFRRAFVTV  
THRLLLLCLGVMVCVVLRYMKYRWTKEEEETRQMYDMVVKIIDVLRSHNEACQENKDLQPYMPIPHVRD  
SLIQPHDRKKMKKVVWDRAVDFLAANESRVRTETRRIGGADFLVWRWIQPSASCDKILVIPSKVWQQQAFH  
LDRRNSPPNSLTPCLKIRNMFDPVMEIGDQWHLAIQEAIKCSNDGIVHIAVDKNSREGCVYVKCLSP  
EYAGKAFKALHGSWFDGKLVTKYLRDLDRYHHRFPQALTSNTPLKPSNKHMNMSMSHLRLRTGLTNSQGSS

**TRTRPLEQKLISEEDLAANDILDYKDDDDKV**

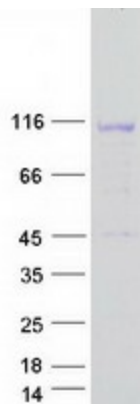
Tag:	C-Myc/DDK
Predicted MW:	100.3
Concentration:	>0.05 µg/µL as determined by microplate BCA method
Purity:	> 80% as determined by SDS-PAGE and Coomassie blue staining
Buffer:	25 mM Tris-HCl, 100 mM glycine, pH 7.3, 10% glycerol
Preparation:	NULL or Add: Recombinant proteins was captured through anti-DDK affinity column followed by conventional chromatography steps.



[View online »](#)

<b>Note:</b>	For testing in cell culture applications, please filter before use. Note that you may experience some loss of protein during the filtration process.
<b>Storage:</b>	Store at -80°C.
<b>Stability:</b>	Stable for 12 months from the date of receipt of the product under proper storage and handling conditions. Avoid repeated freeze-thaw cycles.
<b>RefSeq:</b>	<a href="#">NP_001161086</a>
<b>Locus ID:</b>	23592
<b>UniProt ID:</b>	<a href="#">Q9Y2U8</a>
<b>Cytogenetics:</b>	12q14.3
<b>RefSeq ORF:</b>	2730
<b>Synonyms:</b>	MAN1
<b>Summary:</b>	This locus encodes a LEM domain-containing protein. The encoded protein functions to antagonize transforming growth factor-beta signaling at the inner nuclear membrane. Two transcript variants encoding different isoforms have been found for this gene. Mutations in this gene have been associated with osteopoikilosis, Buschke-Ollendorff syndrome and melorheostosis.[provided by RefSeq, Nov 2009]
<b>Protein Families:</b>	Transmembrane

### Product images:



Coomassie blue staining of purified LEMD3 protein (Cat# [TP330581]). The protein was produced from HEK293T cells transfected with LEMD3 cDNA clone (Cat# [RC230581]) using MegaTran 2.0 (Cat# [TT210002]).