

Product datasheet for **TP330581L**

MAN1 (LEMD3) (NM_001167614) Human Recombinant Protein

Product data:

Product Type:	Recombinant Proteins
Description:	Recombinant protein of human LEM domain containing 3 (LEMD3), transcript variant 2, 1 mg
Species:	Human
Expression Host:	HEK293T
Expression cDNA Clone or AA Sequence:	>RC230581 representing NM_001167614 Red =Cloning site Green =Tags(s)

MAAAAASAPQQLSDEELFSQLRRYGLSPGPVTESTRPVYLKLLKLRREEEQQHRSRGGRGNKTRNSNNNN
TAAATVAAAGPAAAAAAGMGVRPVSGDLSYLRTPGGLCRISASGPESLLGGPGGASAAPAAGSKVLLGFS
SDESDVEASPRDQAGGGGRKDRASLQYRGLKAPPAPLAASEVTNSNSAERRKPHSWWGARRPAGPELQTP
PGKDGAVEDEEGEGEDGEERDPETEELWASRTVNGSRLVPYSCRENYSDSEEDDDDVASSRQVLKDDS
LSRHRPRRTHSKPLPPLTAKSAGGRLETSVQGGGGLAMNDRAAAAAGSLDRSRNLEAAAAEQGGGCDQVD
SSPVPRYRVNAKLLTPLLPPPLTDMSTLDSSTGSLKTNNHIGGGAFSVDSPRIYSNSLPPSAAVAASS
SLRINHANHTGSNHTYLKNTYNKPKLSEPEEELLQQFKREEVSPTGFSFAHYLSMFLLTAACLFFLILGL
TYLGMRGTGVS EDGELS KNPFGETFGKIQESEKTLMMNTLYKLHDRLAQLAGDHECGSSSQRTLSVQEAA
AYLKDLGPEYEGIFNTSLQWILENGKDVGIRCVGFGPEEELTNITDVQFLQSTRPLMSFWCRFRRAFVTV
THRLLLLCLGVMVCVVLRYMKYRWTKEEEETRQMYDMVVKIIDVLRSHNEACQENKDLQPYMPIPHVRD
SLIQPHDRKKMKKVVWDRAVDFLAANESRVRTETRRIGGADFLVWRWIQPSASCDKILVIPSKVWQGFH
LDRRNSPPNSLTPCLKIRNMFDPVMEIGDQWHLAIQEAIKCSNDGIVHIAVDKNSREGCVYVKCLSP
EYAGKAFKALHGSWFDGKLVTKYLRDRYHHRFPQALTSNTPLKPSNKHMNSMSHLRLRTGLTNSQGSS

TRTRPLEQKLISEEDLAANDILDYKDDDDKV

Tag:	C-Myc/DDK
Predicted MW:	100.3
Concentration:	>0.05 µg/µL as determined by microplate BCA method
Purity:	> 80% as determined by SDS-PAGE and Coomassie blue staining
Buffer:	25 mM Tris-HCl, 100 mM glycine, pH 7.3, 10% glycerol
Preparation:	NULL or Add: Recombinant proteins was captured through anti-DDK affinity column followed by conventional chromatography steps.



[View online »](#)

Note: For testing in cell culture applications, please filter before use. Note that you may experience some loss of protein during the filtration process.

Storage: Store at -80°C.

Stability: Stable for 12 months from the date of receipt of the product under proper storage and handling conditions. Avoid repeated freeze-thaw cycles.

RefSeq: [NP_001161086](#)

Locus ID: 23592

UniProt ID: [Q9Y2U8](#)

Cytogenetics: 12q14.3

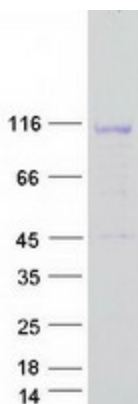
RefSeq ORF: 2730

Synonyms: MAN1

Summary: This locus encodes a LEM domain-containing protein. The encoded protein functions to antagonize transforming growth factor-beta signaling at the inner nuclear membrane. Two transcript variants encoding different isoforms have been found for this gene. Mutations in this gene have been associated with osteopoikilosis, Buschke-Ollendorff syndrome and melorheostosis.[provided by RefSeq, Nov 2009]

Protein Families: Transmembrane

Product images:



Coomassie blue staining of purified LEMD3 protein (Cat# [TP330581]). The protein was produced from HEK293T cells transfected with LEMD3 cDNA clone (Cat# [RC230581]) using MegaTran 2.0 (Cat# [TT210002]).