

## Product datasheet for TP330555M

### KDM1A (NM\_001009999) Human Recombinant Protein

#### Product data:

**Product Type:** Recombinant Proteins

**Description:** Recombinant protein of human lysine (K)-specific demethylase 1A (KDM1A), transcript variant 1, 100 µg

**Species:** Human

**Expression Host:** HEK293T

**Expression cDNA Clone or AA Sequence:** >RC230555 representing NM\_001009999  
Red=Cloning site Green=Tags(s)

MLSGKKAATAAAAAAAAAAATGTEAGPGTAGGSENGSEVAAQPAGLSGPAEVGPGAVGERTPRKKEPPRASP  
PGGLAEPGSGAGPQAGPTVPGSATPMETGIAETPEGRRTSRRKRAKVEYREMDLANLSEDEYSEEE  
RNAKAEKEKKLPPPPQAPPEEENESEPEEPSGQAGGLQDDSSGGYGDQASGVEGAAFQSRLPHDRMST  
QEAACFPDIISGPQQTQKVFLFIRNRTLQLWLDNPKIQLTFEATLQQLEAPYNSDTVLVHRVHVSYLERHG  
LINFGIYKRIKPLPTKKTGKVIIGSGVSGLAAARQLQSFQMDVTLLEARDRVGGRVATFRKGNVYVADLG  
AMVVTGLGGNPMVAVSKQVNMELAKIKQKCPLYEANGQADTVKVPKEKDEMVEQEFNRLLEATSYLSHQL  
DFNVLNNKPVSLGQALEVVIQLQEKHKVDEQIEHWKIVKTQEELKELNKMVNLKEKIKELHQYKEAS  
EVKPPRDITAEFLVSKHRDLTALCKEYDELAETQGKLEEKLQLEANPPSDVYLSSRDRQILDWHFANL  
EFANATPLSTLSLKHWDQDDDFEFTGSHLTVRNGYSCVPVALAEGLDIKLNTAVRQVRYTASGCEVIQV  
TRSTSQTFIYKCDVLCPLGVLKQPPAVQFVPLPEWKTSQVQRMGFGNLNKKVLCFDRVFWDPVSN  
LFGHVGSTTASRGELFLFWNLYKAPILLALVAGEAAGIMENISDDVIVGRCLAALKGIFGSSAVPQPKET  
VVSRRWRADPWARGSYSVAAGSSGNDYDLMAQPITPGPSIPGAPQPIPRLLFFAGEHTIRNYPATVHGALL  
SGLREAGRIADQFLGAMYTLPRQATPGVPAQQSPSM

TRTRPLEQKLISEEDLAANDILDYKDDDDKV

**Tag:** C-Myc/DDK

**Predicted MW:** 95.6

**Concentration:** >0.05 µg/µL as determined by microplate BCA method

**Purity:** > 80% as determined by SDS-PAGE and Coomassie blue staining

**Buffer:** 25 mM Tris-HCl, 100 mM glycine, pH 7.3, 10% glycerol

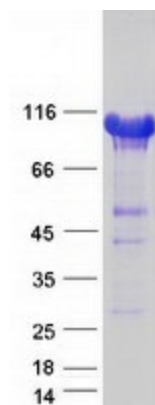
**Preparation:** NULL or Add: Recombinant proteins was captured through anti-DDK affinity column followed by conventional chromatography steps.



[View online »](#)

<b>Note:</b>	For testing in cell culture applications, please filter before use. Note that you may experience some loss of protein during the filtration process.
<b>Storage:</b>	Store at -80°C.
<b>Stability:</b>	Stable for 12 months from the date of receipt of the product under proper storage and handling conditions. Avoid repeated freeze-thaw cycles.
<b>RefSeq:</b>	<a href="#">NP_001009999</a>
<b>Locus ID:</b>	23028
<b>UniProt ID:</b>	<a href="#">O60341</a>
<b>RefSeq Size:</b>	3125
<b>Cytogenetics:</b>	1p36.12
<b>RefSeq ORF:</b>	2628
<b>Synonyms:</b>	AOF2; BHC110; CPRF; KDM1; LSD1
<b>Summary:</b>	This gene encodes a nuclear protein containing a SWIRM domain, a FAD-binding motif, and an amine oxidase domain. This protein is a component of several histone deacetylase complexes, though it silences genes by functioning as a histone demethylase. Alternative splicing results in multiple transcript variants. [provided by RefSeq, Apr 2009]
<b>Protein Families:</b>	Druggable Genome, Transcription Factors

### Product images:



Coomassie blue staining of purified KDM1A protein (Cat# [TP330555]). The protein was produced from HEK293T cells transfected with KDM1A cDNA clone (Cat# [RC230555]) using MegaTran 2.0 (Cat# [TT210002]).