

Product datasheet for TP330555L

KDM1A (NM_001009999) Human Recombinant Protein

Product data:

Product Type:	Recombinant Proteins
Description:	Recombinant protein of human lysine (K)-specific demethylase 1A (KDM1A), transcript variant 1, 1 mg
Species:	Human
Expression Host:	HEK293T
Expression cDNA Clone or AA Sequence:	>RC230555 representing NM_001009999 Red=Cloning site Green=Tags(s)

MLSGKKAATAAAAAAAAAAATGTEAGPGTAGGSENGSEVAAQPAGLSGPAEVGPGAVGERTPRKKEPPRASP
PGGLAEPGSGAGPQAGPTVPGSATPMETGIAETPEGRRTSRRKRAKVEYREMDLANLSEDEYSEEE
RNAKAEKEKKLPPPPQAPPEEENESEPEEPSGQAGGLQDDSSGGYGDGQASGVEGAAFQSRLPHDRMST
QEAACFPDIISGPQQTQKVFLFIRNRTLQLWLDNPKIQLTFEATLQQLEAPYNSDTVLVHRVHSYLERHG
LINFGIYKRIKPLPTKKTGKVIIGSGVSGLAAARQLQSFQMDVTLLEARDRVGGRVATFRKGNVYVADLG
AMVVTGLGGNPMVAVSKQVNMELAKIKQKCPLYEANGQADTVKVPKEKDEMVEQEFNRLLEATSYLSHQL
DFNVLNNKPVSLGQALEVVIQLQEKHKVDEQIEHWKIVKTQEELKELNKMVNLKEKIKELHQYKEAS
EVKPPRDITAEFLVSKHRDLTALCKEYDELAETQGKLEEKLQLEANPPSDVYLSSRDRQILDWHFANL
EFANATPLSTLSLKHWDQDDDFEFTGSHLTVRNGYSCVPVALAEGLDIKLNTAVRQVRYTASGCEVIQV
TRSTSQTFIYKCDVAVLCTPLGVLKQPPAVQFVPLPEWKTSVAVQRMGFGNLNKKVLCFDRVFWDPVSN
LFGHVGSTTASRGELFLFWNLYKAPILLALVAGEAAGIMENISDDVIVGRCLAALKGIFGSSAVPQPKET
VVRWRADPWARGSYSVAAGSSGNDYDLMAQPITPGSPGAPQPIPRLFFAGEHTIRNYPATVHGALL
SGLREAGRIADQFLGAMYTLPRQATPGVPAQQSPSM

TRTRPLEQKLISEEDLAANDILDYKDDDDKV

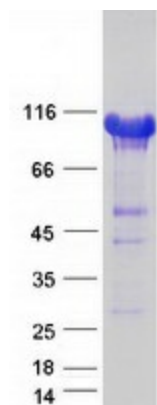
Tag:	C-Myc/DDK
Predicted MW:	95.6
Concentration:	>0.05 µg/µL as determined by microplate BCA method
Purity:	> 80% as determined by SDS-PAGE and Coomassie blue staining
Buffer:	25 mM Tris-HCl, 100 mM glycine, pH 7.3, 10% glycerol
Preparation:	NULL or Add: Recombinant proteins was captured through anti-DDK affinity column followed by conventional chromatography steps.



[View online »](#)

Note:	For testing in cell culture applications, please filter before use. Note that you may experience some loss of protein during the filtration process.
Storage:	Store at -80°C.
Stability:	Stable for 12 months from the date of receipt of the product under proper storage and handling conditions. Avoid repeated freeze-thaw cycles.
RefSeq:	NP_001009999
Locus ID:	23028
UniProt ID:	O60341
RefSeq Size:	3125
Cytogenetics:	1p36.12
RefSeq ORF:	2628
Synonyms:	AOF2; BHC110; CPRF; KDM1; LSD1
Summary:	This gene encodes a nuclear protein containing a SWIRM domain, a FAD-binding motif, and an amine oxidase domain. This protein is a component of several histone deacetylase complexes, though it silences genes by functioning as a histone demethylase. Alternative splicing results in multiple transcript variants. [provided by RefSeq, Apr 2009]
Protein Families:	Druggable Genome, Transcription Factors

Product images:



Coomassie blue staining of purified KDM1A protein (Cat# [TP330555]). The protein was produced from HEK293T cells transfected with KDM1A cDNA clone (Cat# [RC230555]) using MegaTran 2.0 (Cat# [TT210002]).