

Product datasheet for TP330472M

NUTM2G (NM_001170741) Human Recombinant Protein

Product data:

Product Type: Recombinant Proteins
Description: Recombinant protein of human family with sequence similarity 22, member G (FAM22G), transcript variant 2, 100 µg
Species: Human
Expression Host: HEK293T
Expression cDNA Clone or AA Sequence: >RC230472 representing NM_001170741
Red=Cloning site **Green**=Tags(s)

MASNGAYPVLGPGVTVNPGTSLSVFTALPFATPSPGPTHRPPPLVTAVPPAGPLVLSAFPSTPLVAGQDG
RGPSGAGASNVFVQMRTEVGPVKPPQAQTLILTQAPLVWQAPGTLCCGVMCPPPLLLLAAAPGVPVTSQAQV
VGGTQACEGGWVSHGLPLPPPPAAQVAVIVSPGNAGPWPQGAHGEGLSAPSQAKARPDSDCKPKSVYENF
RLWQHYKPLARRHLPQSPDTEALSCFLIPVLRSLARRKPTMTLEEGLWRAMREWQHTSNFDRMIFYEMAA
KFLEFEAEEMQIQKSQWMKGPQSLPPPAPRLEPRGPPAPEVVKQPVYLPKDGPKAPTACLPPPRPQR
PAETKAHLPPPRPPAETKVPEEIPPEVQYVDIMEELLGSHPGDTGEPEGQREKKGVEQPQEEDGMT
SDPGLLSYIDKLCSEQEDFVTKVEAVIHRPFLEELLSPDPQMDFLALSQEQEEGLTLAQLVEKRLLSLK
EKGCGRAPRHGTARLDSSPSEFAAGQEAAREVPDPQQRVSVETSPQTAQAQDPQGQGRVRTGMARSED
AVLLGCQDSPRLKAVRPTSPQDHRPTCPGLGTDALGLPGESPVKESHGLAKGSSEETELPGMVVWVGS
HHRLRPWRLSQSPVPSSGLLSPGGRGPQALQSPSAQKRGLSPSPSPASKSKKRPLFGSPSPAETKTPHPG
PGLRVSGEQSLAWGLGGPSQSQRKRGDPLASRRKKKRHCSQ

TRTRPLEQKLISEEDLAANDILDYKDDDDKV

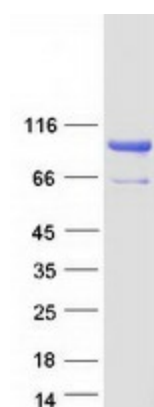
Tag: C-Myc/DDK
Predicted MW: 79.5
Concentration: >0.05 µg/µL as determined by microplate BCA method
Purity: > 80% as determined by SDS-PAGE and Coomassie blue staining
Buffer: 25 mM Tris-HCl, 100 mM glycine, pH 7.3, 10% glycerol
Preparation: NULL or Add: Recombinant proteins was captured through anti-DDK affinity column followed by conventional chromatography steps.
Note: For testing in cell culture applications, please filter before use. Note that you may experience some loss of protein during the filtration process.



[View online »](#)

Storage:	Store at -80°C.
Stability:	Stable for 12 months from the date of receipt of the product under proper storage and handling conditions. Avoid repeated freeze-thaw cycles.
RefSeq:	NP_001164212
Locus ID:	441457
UniProt ID:	Q5VZR2
Cytogenetics:	9q22.33
RefSeq ORF:	2223
Synonyms:	FAM22G; NUTMG
Protein Families:	Secreted Protein

Product images:



Coomassie blue staining of purified NUTM2G protein (Cat# [TP330472]). The protein was produced from HEK293T cells transfected with NUTM2G cDNA clone (Cat# [RC230472]) using MegaTran 2.0 (Cat# [TT210002]).