

Product datasheet for **TP330343M**

SRPR alpha (SRPRA) (NM_001177842) Human Recombinant Protein

Product data:

Product Type:	Recombinant Proteins
Description:	Recombinant protein of human signal recognition particle receptor (docking protein) (SRPR), transcript variant 2, 100 µg
Species:	Human
Expression Host:	HEK293T
Expression cDNA Clone or AA Sequence:	>RC230343 representing NM_001177842 Red =Cloning site Green =Tags(s)

MLDFFTIFSKGGLVLWCFQGVSDSCTGPVNALIRSVLLQVGFQKILTLYVDKLI DDVHRLFRDKYRTEI
QQQSALSLLNGTDFDQNDLRLREAEESKIRAPTTMKKFEDSEKAKKPVRSMIETRGEKPKKAKNSK
KKGAKKEGSDGPLATSKPVPKESGLPVGPENGVELSKEELIRRKEEFIQKHGRGMEKSNKSTKSDAPK
EKGGKAPRVWELGGCANKEVLDYSTPTTNGTPEAALSEDINLIRGTGSGGQLQDLDCSSSDDEGAAQNST
KPSATKGTGGMFGMLKGLVGSKLSREDMESVLDKMRDHIAKNVAADIAVQLCESVANKLEGKVMGTF
STVTSTVKQALQESLVQILQPQRRVDMLRDIMDAQRRQRPYVVTFCGVNGVGKSTNLAKISFWLLENGFS
VLIAACDTFRAGAVEQLRTHTRRLSALHPPEKHGGRTMVQLFEKGYGKDAAGIAMEAIAFARNQGFVVL
VDTAGRMQDNAPLMTALAKLITVNTPDLVLFVGEALVGNEAVDQLVKFNALADHSMAQTPRLIDGIVLT
KFDTIDDKVGAAISMTYITSKPIVFGTGQTYCDLRLSLNAKAVVAALMKA

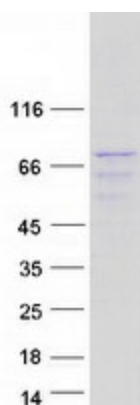
SGPTRRRLE**QKLISEEDLAANDILDYKDDDDKV**

Tag:	C-Myc/DDK
Predicted MW:	67
Concentration:	>0.05 µg/µL as determined by microplate BCA method
Purity:	> 80% as determined by SDS-PAGE and Coomassie blue staining
Buffer:	25 mM Tris-HCl, 100 mM glycine, pH 7.3, 10% glycerol
Preparation:	NULL or Add: Recombinant proteins was captured through anti-DDK affinity column followed by conventional chromatography steps.
Note:	For testing in cell culture applications, please filter before use. Note that you may experience some loss of protein during the filtration process.
Storage:	Store at -80°C.



[View online »](#)

Stability:	Stable for 12 months from the date of receipt of the product under proper storage and handling conditions. Avoid repeated freeze-thaw cycles.
RefSeq:	NP_001171313
Locus ID:	6734
UniProt ID:	P08240
Cytogenetics:	11q24.2
RefSeq ORF:	1830
Synonyms:	DP; Sralpha; SRPR
Summary:	The gene encodes a subunit of the endoplasmic reticulum signal recognition particle receptor that, in conjunction with the signal recognition particle, is involved in the targeting and translocation of signal sequence tagged secretory and membrane proteins across the endoplasmic reticulum. Alternative splicing results in multiple transcript variants. [provided by RefSeq, Apr 2010]
Protein Families:	Druggable Genome
Protein Pathways:	Protein export

Product images:

Coomassie blue staining of purified SRPRA protein (Cat# [TP330343]). The protein was produced from HEK293T cells transfected with SRPRA cDNA clone (Cat# [RC230343]) using MegaTran 2.0 (Cat# [TT210002]).