

Product datasheet for **TP330039L**

CELF3 (NM_001172649) Human Recombinant Protein

Product data:

Product Type:	Recombinant Proteins
Description:	Purified recombinant protein of Homo sapiens CUGBP, Elav-like family member 3 (CELFB3), transcript variant 3, 1 mg
Species:	Human
Expression Host:	HEK293T
Expression cDNA Clone or AA Sequence:	>RC230039 representing NM_001172649 Red =Cloning site Green =Tags(s)
	MKEPDAIKLFVGGQIPRHLEEKDLKPIFEQFGRIFELTVIKDKYTGLHKGCAFLTYCARDSALKAQSALHE QKTLPGMNRPIQVKPADSESRGEDRKLKLVGMLGKQQTDEDVRKMFEPFGTIDECTVLRGPDGTSKGCFAV KFQTHAEAQAINTLHSSRTLPGASSLVVKFADTEKERGLRRMQQVATQLGMFSPIALQFGAYSAYTQA LMQQQAALVAAHSAYLSPMATMAAVQMQHMAAINANGLIATPITPSSAQSPAAPVDPLQQAYAGMQHYTA AYPAAAYSLVAPAFPQPPALVAQQPPPPPPQQQQQQQQQQQQQREGPDGCNIFIYHLPQEFTDSEILQMF VPFGHVISAQKVFVDRATNQSCKCFGFVFDNPASAAQAAIQAMNGFQIGMKRLKLVQLKRPKDANRPY TRTRPLEQKLISEEDLAANDILDYKDDDDKV
Tag:	C-Myc/DDK
Predicted MW:	46.1
Concentration:	>0.05 µg/µL as determined by microplate BCA method
Purity:	> 80% as determined by SDS-PAGE and Coomassie blue staining
Buffer:	25 mM Tris-HCl, 100 mM glycine, pH 7.3, 10% glycerol
Preparation:	NULL or Add: Recombinant proteins was captured through anti-DDK affinity column followed by conventional chromatography steps.
Note:	For testing in cell culture applications, please filter before use. Note that you may experience some loss of protein during the filtration process.
Storage:	Store at -80°C.
Stability:	Stable for 12 months from the date of receipt of the product under proper storage and handling conditions. Avoid repeated freeze-thaw cycles.
RefSeq:	<u>NP_001166120</u>



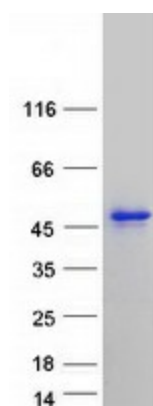
[View online »](#)

Locus ID: 11189
UniProt ID: [Q5SZQ8](#)
Cytogenetics: 1q21.3
RefSeq ORF: 1245
Synonyms: BRUNOL1; CAGH4; ERDA4; ETR-1; TNRC4

Summary: Members of the CELF/BRUNOL protein family contain two N-terminal RNA recognition motif (RRM) domains, one C-terminal RRM domain, and a divergent segment of 160-230 aa between the second and third RRM domains. Members of this protein family regulate pre-mRNA alternative splicing and may also be involved in mRNA editing, and translation. Multiple alternatively spliced transcript variants encoding different isoforms have been identified in this gene. [provided by RefSeq, Feb 2010]

Protein Families: Transcription Factors

Product images:



Coomassie blue staining of purified CELF3 protein (Cat# [TP330039]). The protein was produced from HEK293T cells transfected with CELF3 cDNA clone (Cat# [RC230039]) using MegaTran 2.0 (Cat# [TT210002]).