

Product datasheet for **TP329923L**

PP11 (ENDOU) (NM_001172440) Human Recombinant Protein

Product data:

Product Type:	Recombinant Proteins
Description:	Purified recombinant protein of Homo sapiens endonuclease, polyU-specific (ENDOU), transcript variant 3, 1 mg
Species:	Human
Expression Host:	HEK293T
Expression cDNA Clone or AA Sequence:	>RC229923 representing NM_001172440 Red =Cloning site Green =Tags(s)

MRACISLVLAVLCGLAWADLYSAPTSCQGRCEAFDKHHQCHCNARCQEFGNCKDFESLCSDEHVS
SHSSDAITKEEIQSISEKIYRADTNKAQKEDIVLNSQNCISPSETRNQVDRCPKPLFTYVNEKLF
SKPTYAAFI NLLNNYQRATGHEHFAQELAEQDAFLREIMKTAVMKELYSFLHHQNR
YGSEQEFVDDLKNNMWFGLYSR GNEEGDSSGFEHVFSGEVKKGKVTGFHNWIRFY
LEEKEGLVDYSHIYDGPWDSYDPV LAMQFNWDGYYK EVGSAFIGSSPEFEFALYS
LFCFIARPGKVCQLSLGGYPLAVRYYTWKSTYGNKGKYYIATAYIVSST

TRTRPLEQKLISEEDLAANDILDYKDDDDKV

Tag:	C-Myc/DDK
Predicted MW:	40.1
Concentration:	>0.05 µg/µL as determined by microplate BCA method
Purity:	> 80% as determined by SDS-PAGE and Coomassie blue staining
Buffer:	25 mM Tris-HCl, 100 mM glycine, pH 7.3, 10% glycerol
Preparation:	NULL or Add: Recombinant proteins was captured through anti-DDK affinity column followed by conventional chromatography steps.
Note:	For testing in cell culture applications, please filter before use. Note that you may experience some loss of protein during the filtration process.
Storage:	Store at -80°C.
Stability:	Stable for 12 months from the date of receipt of the product under proper storage and handling conditions. Avoid repeated freeze-thaw cycles.
RefSeq:	NP_001165911
Locus ID:	8909



[View online »](#)

UniProt ID: [P21128](#)

Cytogenetics: 12q13.11

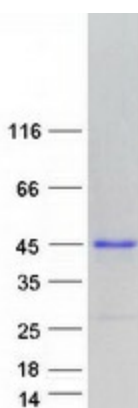
RefSeq ORF: 1041

Synonyms: P11; PP11; PRSS26

Summary: This gene encodes a protein with endoribonuclease activity that binds polyuridine-enriched single-stranded RNA. This gene was initially characterized based on its high expression in placenta but was mischaracterized as a serine protease. In mouse, this gene promotes tolerance to self-antigens by regulating B cell activation-induced cell death (AICD). The protein may be useful as a tumor marker. Multiple alternatively spliced transcript variants encoding distinct protein isoforms have been found for this gene. [provided by RefSeq, Jul 2020]

Protein Families: Protease

Product images:



Coomassie blue staining of purified ENDOU protein (Cat# [TP329923]). The protein was produced from HEK293T cells transfected with ENDOU cDNA clone (Cat# [RC229923]) using MegaTran 2.0 (Cat# [TT210002]).