

## Product datasheet for **TP329858L**

### CLM 9 (CD300LG) (NM\_001168322) Human Recombinant Protein

#### Product data:

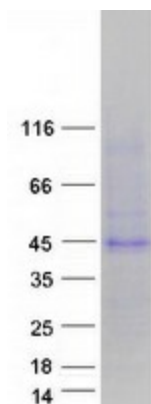
Product Type:	Recombinant Proteins
Description:	Purified recombinant protein of Homo sapiens CD300 molecule-like family member g (CD300LG), transcript variant 4, 1 mg
Species:	Human
Expression Host:	HEK293T
Expression cDNA Clone or AA Sequence:	>RC229858 representing NM_001168322 <b>Red</b> =Cloning site <b>Green</b> =Tags(s)
	 MRLLVLLWGCLLLPGYEALGPEEISGFEGD TVSLQCTYREELRDHRKYWCRKGGILFSRCSGTIYAE GQETMKGRVSIRDSRQELSLIVTLWNLTLQDAGEYWCGVEKRGPD ELLISLFVFPGCCPPSPSPTFQP LATTRLQPKAKAQTQPPGLTSPGLYPAATTAKQGKTGAEAPPLPGTSQYGHERTSQYTGTSHPATSP AGSSRPPMQLDSTSAEDTSPALSSGSSKPRVSIPMVRILAPVLVLLSLLSAAGLIAFCSHLLLWRKEAQQ ATETQRNEKFLSRLNSLMFSLSPWL  <b>TRTRPLEQKLISEEDLAANDILDYKDDDDKV</b>
Tag:	C-Myc/DDK
Predicted MW:	34
Concentration:	>0.05 µg/µL as determined by microplate BCA method
Purity:	> 80% as determined by SDS-PAGE and Coomassie blue staining
Buffer:	25 mM Tris-HCl, 100 mM glycine, pH 7.3, 10% glycerol
Preparation:	NULL or Add: Recombinant proteins was captured through anti-DDK affinity column followed by conventional chromatography steps.
Note:	For testing in cell culture applications, please filter before use. Note that you may experience some loss of protein during the filtration process.
Storage:	Store at -80°C.
Stability:	Stable for 12 months from the date of receipt of the product under proper storage and handling conditions. Avoid repeated freeze-thaw cycles.
RefSeq:	<a href="#">NP_001161794</a>
Locus ID:	146894



[View online »](#)

UniProt ID:	<a href="#">Q6UXG3</a>
Cytogenetics:	17q21.31
RefSeq ORF:	921
Synonyms:	CLM-9; CLM9; NEPMUCIN; TREM-4; TREM4
Summary:	Members of the CD300 (see MIM 606786)-like (CD300L) family, such as CD300LG, are widely expressed on hematopoietic cells. All CD300L proteins are type I cell surface glycoproteins that contain a single immunoglobulin (Ig) V-like domain (Takatsu et al., 2006 [PubMed 16876123]).[supplied by OMIM, Mar 2008]
Protein Families:	Druggable Genome, Transmembrane

### Product images:



Coomassie blue staining of purified CD300LG protein (Cat# [TP329858]). The protein was produced from HEK293T cells transfected with CD300LG cDNA clone (Cat# [RC229858]) using MegaTran 2.0 (Cat# [TT210002]).