

## Product datasheet for TP329827

### LY108 (SLAMF6) (NM\_001184715) Human Recombinant Protein

#### Product data:

Product Type:	Recombinant Proteins
Description:	Purified recombinant protein of Homo sapiens SLAM family member 6 (SLAMF6), transcript variant 3, 20 µg
Species:	Human
Expression Host:	HEK293T
Expression cDNA Clone or AA Sequence:	>RC229827 representing NM_001184715 <b>Red</b> =Cloning site <b>Green</b> =Tags(s)
	<p>MLWLFQSLLFVFCFGPVPHETKSPEIHVTNPKQGKRLNFTQSYSLQLSNLKMEDTGSYRAQISTKTSAKL SSYTLRILRQLRNIQVTNHSQLFQNMTCELHLTCSVEDADDNVSFRWEALGNTLSSQPNLTVSWDPRISS EQDYTCIAENAVSNLSFSVSAQKLCEDVKIQYDTDKMILFMVSGICIVFGFIILLLLVLRKRRDLSLSLST QRTQGPESARNLEYVSVSPTNNTVYASVTHSNRETEIWTPRENDTITIYSTINHSKESKPTFSRATALDN VV</p> <p><b>TR</b>TRPLEQKLISEEDLAANDILDYKDDDDKV</p>
Tag:	C-Myc/DDK
Predicted MW:	32.5
Concentration:	>0.05 µg/µL as determined by microplate BCA method
Purity:	> 80% as determined by SDS-PAGE and Coomassie blue staining
Buffer:	25 mM Tris-HCl, 100 mM glycine, pH 7.3, 10% glycerol
Preparation:	NULL or Add: Recombinant proteins was captured through anti-DDK affinity column followed by conventional chromatography steps.
Note:	For testing in cell culture applications, please filter before use. Note that you may experience some loss of protein during the filtration process.
Storage:	Store at -80°C.
Stability:	Stable for 12 months from the date of receipt of the product under proper storage and handling conditions. Avoid repeated freeze-thaw cycles.
RefSeq:	<u><a href="#">NP_001171644</a></u>
Locus ID:	114836



[View online »](#)

UniProt ID: [Q96DU3](#), [B4E1U5](#)

Cytogenetics: 1q23.2-q23.3

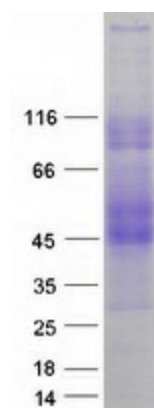
RefSeq ORF: 846

Synonyms: CD352; KALI; KAL1b; Ly108; NTB-A; NTBA; SF2000

**Summary:** The protein encoded by this gene is a type I transmembrane protein, belonging to the CD2 subfamily of the immunoglobulin superfamily. This encoded protein is expressed on Natural killer (NK), T, and B lymphocytes. It undergoes tyrosine phosphorylation and associates with the Src homology 2 domain-containing protein (SH2D1A) as well as with SH2 domain-containing phosphatases (SHPs). It functions as a coreceptor in the process of NK cell activation. It can also mediate inhibitory signals in NK cells from X-linked lymphoproliferative patients. Alternative splicing results in multiple transcript variants encoding distinct isoforms. [provided by RefSeq, May 2010]

**Protein Families:** Druggable Genome, Transmembrane

### Product images:



Coomassie blue staining of purified SLAMF6 protein (Cat# TP329827). The protein was produced from HEK293T cells transfected with SLAMF6 cDNA clone (Cat# [RC229827]) using MegaTran 2.0 (Cat# [TT210002]).