

## Product datasheet for TP329805M

### CLM 9 (CD300LG) (NM\_001168323) Human Recombinant Protein

#### Product data:

Product Type:	Recombinant Proteins
Description:	Purified recombinant protein of Homo sapiens CD300 molecule-like family member g (CD300LG), transcript variant 3, 100 µg
Species:	Human
Expression Host:	HEK293T
Expression cDNA Clone or AA Sequence:	>RC229805 representing NM_001168323 Red=Cloning site Green=Tags(s)
	MRLLVLLWGCLLLPGYEALLEGPEEISGFEGDTVSLQCTYREELRDHRKYWCRKGGILFSRCSGTIYAE EQETMKGRVSRDSRQELSLIVTLWNLTLQDAGEYWCGVEKRGPDSELLISLFVFPASPLYPAAATTAKQ GKTGAEAPPLPGTSQYGHERTSQYTGTSPPHATSPAGSSRPPMQLDSTAEDTSPALSSGSSKPRVSIP MVRILAPVLVLLSLLSAAGLIAFCSHLLLWRKEAQQATETQRNEKFCLSRNLNMFSLSLPWL
	TRTRPLEQKLISEEDLAANDILDYKDDDDKV
Tag:	C-Myc/DDK
Predicted MW:	30.4
Concentration:	>0.05 µg/µL as determined by microplate BCA method
Purity:	> 80% as determined by SDS-PAGE and Coomassie blue staining
Buffer:	25 mM Tris-HCl, 100 mM glycine, pH 7.3, 10% glycerol
Preparation:	NULL or Add: Recombinant proteins was captured through anti-DDK affinity column followed by conventional chromatography steps.
Note:	For testing in cell culture applications, please filter before use. Note that you may experience some loss of protein during the filtration process.
Storage:	Store at -80°C.
Stability:	Stable for 12 months from the date of receipt of the product under proper storage and handling conditions. Avoid repeated freeze-thaw cycles.
RefSeq:	<a href="#">NP_001161795</a>
Locus ID:	146894



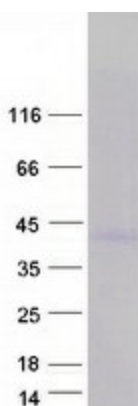
[View online »](#)

UniProt ID: [Q6UXG3](#)  
Cytogenetics: 17q21.31  
RefSeq ORF: 819  
Synonyms: CLM-9; CLM9; NEPMUCIN; TREM-4; TREM4

**Summary:** Members of the CD300 (see MIM 606786)-like (CD300L) family, such as CD300LG, are widely expressed on hematopoietic cells. All CD300L proteins are type I cell surface glycoproteins that contain a single immunoglobulin (Ig) V-like domain (Takatsu et al., 2006 [PubMed 16876123]).[supplied by OMIM, Mar 2008]

**Protein Families:** Druggable Genome, Transmembrane

### Product images:



Coomassie blue staining of purified CD300LG protein (Cat# [TP329805]). The protein was produced from HEK293T cells transfected with CD300LG cDNA clone (Cat# [RC229805]) using MegaTran 2.0 (Cat# [TT210002]).