

Product datasheet for **TP329655L**

CT45A5 (NM_001172288) Human Recombinant Protein

Product data:

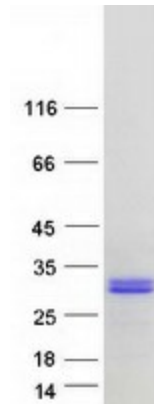
Product Type:	Recombinant Proteins
Description:	Purified recombinant protein of Homo sapiens cancer/testis antigen family 45, member A5 (CT45A5), transcript variant 2, 1 mg
Species:	Human
Expression Host:	HEK293T
Expression cDNA Clone or AA Sequence:	>RC229655 representing NM_001172288 Red =Cloning site Green =Tags(s) MTDKTEKVAVDPETVFKRPRECDSPSYQKRQRMALLARKQGAGDSLIAGSAMSKEKKLMTGHAIPPSQLD SQIDDFTGFSKDGMMQKPGSNAPVGGNVTSNFSGDDLECRGIASSPKSQQEINADIKCQVVKEIRCLGRK YEKIFEMLEGVQGPTAVRKRFESIIEAARCMRRDFVKHLKKLKRMI TRTRPLEQKLISEEDLAANDILDYKDDDDKV
Tag:	C-Myc/DDK
Predicted MW:	21.7
Concentration:	>0.05 µg/µL as determined by microplate BCA method
Purity:	> 80% as determined by SDS-PAGE and Coomassie blue staining
Buffer:	25 mM Tris-HCl, 100 mM glycine, pH 7.3, 10% glycerol
Preparation:	NULL or Add: Recombinant proteins was captured through anti-DDK affinity column followed by conventional chromatography steps.
Note:	For testing in cell culture applications, please filter before use. Note that you may experience some loss of protein during the filtration process.
Storage:	Store at -80°C.
Stability:	Stable for 12 months from the date of receipt of the product under proper storage and handling conditions. Avoid repeated freeze-thaw cycles.
RefSeq:	<u>NP_001165759</u>
Locus ID:	441521
UniProt ID:	<u>P0DMU8</u>



[View online »](#)

Cytogenetics:	Xq26.3
RefSeq ORF:	567
Synonyms:	CT45-3; CT45-4; CT45-6; CT45.5; CT45A3; CT45A4; CT45A6; CT45A7; CT455
Summary:	This gene represents one of a cluster of several similar genes located on the q arm of chromosome X. The genes in this cluster encode members of the cancer/testis (CT) family of antigens, and are distinct from other CT antigens. These antigens are thought to be novel therapeutic targets for human cancers. Alternative splicing results in multiple transcript variants. [provided by RefSeq, Apr 2014]

Product images:



Coomassie blue staining of purified CT45A5 protein (Cat# [TP329655]). The protein was produced from HEK293T cells transfected with CT45A5 cDNA clone (Cat# [RC229655]) using MegaTran 2.0 (Cat# [TT210002]).