

Product datasheet for **TP329333L**

SH2B2 (NM_020979) Human Recombinant Protein

Product data:

Product Type: Recombinant Proteins
Description: Purified recombinant protein of Homo sapiens SH2B adaptor protein 2 (SH2B2), 1 mg
Species: Human
Expression Host: HEK293T
Expression cDNA Clone or AA Sequence: >RC229333 representing NM_020979
Red=Cloning site **Green**=Tags(s)

MDPSYCPAHGFPSQDPLWPLSSQQWSSAHYSEPAAGGCDGTEAMNGAGPGPAAAAAPVVPVVPDWRQFC
ELHAQAAAVDFAHKFCRFLRDNPAYDTPDAGASFSRHFAANFLDVFGEVRRVLVAGPTTRGAAVSAEAM
EPELADTSALKAAPYGHSRSEDVSTHAATKARVRKGFSLRNMSLCVVDGVRDMWHRRASPEPDAAPR
TAEPKDWTRRLRLSRTLAAKVELVDIQREGALRFMVADDAAGSGGSAQWQKCRLLRRRAVEERFRLE
FFVPPKASRPKVSIPLSAIEVRTTMPLEMPKDNFTVLKVENGAEYILETIDSLQKHSWVADIQGCVDP
GDSEEDTELSCTRGGCLASRVASCCELLTDAVDLPRPPETTAVGAVTAPHSRGRDAVRESLIHVPLET
FLQTLESPGGSGSDSNNTGEQGAETDPEAEPELELSDYPWFHGTLSRVKAAQLVLGGPRNHGLFVIRQS
ETRPGEYVLTFFNQGKAKHLRLSLNGHGQCHVQHLWFQSVLDMRLHFHTHIPILESAGSADITLRSYVRA
QDPPPEPGPTPPAAPASPACWSDSPGQHYFSSLAACPPASPSDAAGASSSSASSSSAASGPAPRPVE
GQLSARSRNSAERLLEAVAATAAEPPPEAAPGRARAVENQYSFY

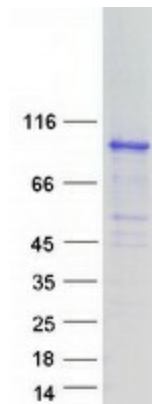
TRTRPLEQKLISEEDLAANDILDYKDDDDKV

Tag: C-Myc/DDK
Predicted MW: 72.1 kDa
Concentration: >0.05 µg/µL as determined by microplate BCA method
Purity: > 80% as determined by SDS-PAGE and Coomassie blue staining
Buffer: 25 mM Tris-HCl, 100 mM glycine, pH 7.3, 10% glycerol
Preparation: NULL or Add: Recombinant proteins was captured through anti-DDK affinity column followed by conventional chromatography steps.
Note: For testing in cell culture applications, please filter before use. Note that you may experience some loss of protein during the filtration process.
Storage: Store at -80°C.



[View online »](#)

Stability:	Stable for 12 months from the date of receipt of the product under proper storage and handling conditions. Avoid repeated freeze-thaw cycles.
RefSeq:	NP_066189
Locus ID:	10603
UniProt ID:	O14492 , A0A0A0MT12
Cytogenetics:	7q22.1
RefSeq ORF:	2025
Synonyms:	APS
Summary:	The protein encoded by this gene is expressed in B lymphocytes and contains pleckstrin homology and src homology 2 (SH2) domains. In Burkitt's lymphoma cell lines, it is tyrosine-phosphorylated in response to B cell receptor stimulation. Because it binds Shc independent of stimulation and Grb2 after stimulation, it appears to play a role in signal transduction from the receptor to the Shc/Grb2 pathway. [provided by RefSeq, Jun 2009]
Protein Families:	Druggable Genome
Protein Pathways:	Insulin signaling pathway, Neurotrophin signaling pathway

Product images:

Coomassie blue staining of purified SH2B2 protein (Cat# [TP329333]). The protein was produced from HEK293T cells transfected with SH2B2 cDNA clone (Cat# [RC229333]) using MegaTran 2.0 (Cat# [TT210002]).