

Product datasheet for **TP329194M**

RILPL1 (NM_178314) Human Recombinant Protein

Product data:

Product Type:	Recombinant Proteins
Description:	Recombinant protein of human Rab interacting lysosomal protein-like 1 (RILPL1), 100 µg
Species:	Human
Expression Host:	HEK293T
Expression cDNA Clone or AA Sequence:	>RC229194 representing NM_178314 Red =Cloning site Green =Tags(s)
	 MEEERGSALAAESALEKNVAELTVMDVYDIASLVGHEFERVIDQHGCEAIARLMPKVVRVLEILEVLVSR HHVAPELDELRLRLRLRMDRIEKERKHQKELELVEDVWRGEAQDLLSQIAQLQEENKQLMTNLSHK DVNFSEEEFQKHEGMSERERQVMKKLKEVVDKQRDEIRAKDRELGLKNEDVEALQQQQLMKINHDLR H RVTVVEAQGKALIEQKVELEADLQTKEQEMGSLRAELGKLRLRQLQGEHSQNGEEEPETEPVGEESISDAE KVAMDLKDPNRPRFTLQELRDVLHERNELKSKVFLQEELEYKSEEMEEENRIPQPPPIAHPTSPQPE SGIKRLFSFFSRDKKRLANTQRNVHIQESFGQWANTHRDDGYTEQGQEQALQHL TRTRPLEQKLISEEDLAANDILDYKDDDDKV
Tag:	C-Myc/DDK
Predicted MW:	46.9 kDa
Concentration:	>0.05 µg/µL as determined by microplate BCA method
Purity:	> 80% as determined by SDS-PAGE and Coomassie blue staining
Buffer:	25 mM Tris-HCl, 100 mM glycine, pH 7.3, 10% glycerol
Preparation:	Recombinant protein was captured through anti-DDK affinity column followed by conventional chromatography steps.
Note:	For testing in cell culture applications, please filter before use. Note that you may experience some loss of protein during the filtration process.
Storage:	Store at -80°C.
Stability:	Stable for 12 months from the date of receipt of the product under proper storage and handling conditions. Avoid repeated freeze-thaw cycles.
RefSeq:	<u>NP_847884</u>



[View online »](#)

Locus ID: 353116

UniProt ID: [Q5EBL4](#)

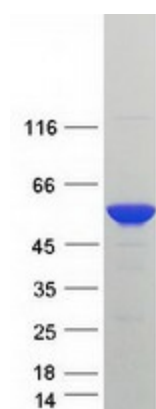
Cytogenetics: 12q24.31

RefSeq ORF: 1209

Synonyms: GOSPEL; RLP1

Summary: Plays a role in the regulation of cell shape and polarity. Plays a role in cellular protein transport, including protein transport away from primary cilia. Neuroprotective protein, which acts by sequestering GAPDH in the cytosol and prevent the apoptotic function of GAPDH in the nucleus. Competes with SIAH1 for binding GAPDH (By similarity). Does not regulate lysosomal morphology and distribution.[UniProtKB/Swiss-Prot Function]

Product images:



Coomassie blue staining of purified RILPL1 protein (Cat# [TP329194]). The protein was produced from HEK293T cells transfected with RILPL1 cDNA clone (Cat# [RC229194]) using MegaTran 2.0 (Cat# [TT210002]).