

## Product datasheet for TP329072L

### KDM3A / JHDM2A (KDM3A) (NM\_001146688) Human Recombinant Protein

#### Product data:

Product Type:	Recombinant Proteins
Description:	Recombinant protein of human lysine (K)-specific demethylase 3A (KDM3A), transcript variant 2, 1 mg
Species:	Human
Expression Host:	HEK293T
Expression cDNA	>RC229072 protein sequence
Clone or AA Sequence:	Red=Cloning site Green=Tags(s)

MVLTLGESWPVLVGRFSLSLAADGSDGSHDSWDVERVAEWPWLSGTIRAVSHTDVTKKDLKVCVEFDGE  
SWRKRRWIEVYLLRRAFLVEHNLVLAERKSPEISERIVQWPAITYKPLLDKAGLSITSVRFLGDQQRV  
FLSKDLLKPIQDVNSLRLSLTDNQIVSKEFQALIVKHLDESHLLKGDKNLVGSEVKIYSLDPSTQWFSAT  
VINGNPASKTLQVNCEEIPALKIVDPSLIHVEVVDNLVTCGNSARIGAVKRKSENNGTLVSKQAKSCS  
EASPSMCPVQSVPTTVFKEILLGCTAATPPSKDPRQQSTPQAANSPPNLGAKIPQGCHKQSLPEEISSCL  
NTKSEALRTKPDVCKAGLLSKSSQIGTDLKILTEPKGSCTQPKTNTDQENRLESVPQALTGLPKECLPT  
KASSKAELEIANPPELQKHLEHAPSPSDVSNAPVKAQVNSDSPNNCSGKKVEPSALACRSQNLKESVVK  
VDNESCCSRSNKIQNAPSRKSVLTDPAKLLKQQSGEAFVQDDSCVNIVAQLPKCRECLDSLKDKKEQ  
QKDSVPVFCRFFHFRRLQFNKHGVLVVEGFLTPNKYDNEAIGLWLPLTKNVVIGIDLDTAKYILANIGDHFC  
QMVISEKEAMSTIEPHRQVAWKRAVKGVREMCVDCDTTIFNLHWVCPRCGFGVCVDCYMRKRNKCQQGAA  
YKTFSWLKCVKSIHEPENLMPTQIIPGKALYDVGDIVHSVRKWKIGKANPCSNRQFKLFSKPAKEDL  
KQTSLAGEKPTLGAVLQQNPSVLEPAAVGGEAASKPAGSMKPACPASTSPLNWLADLTSGNVNKENKEKQ  
PTMPILKNEIKCLPPLPLSKSSTVLHTFNSTILTPVSNNSGFLRNLLNSSTGKTENGLKNTPKILDDI  
FASLVQNKTTSDLSKRPQGLTIKPSILGFDTPHYWLCDNRLCLQDPNNKSNWNVWFRECKWQGGPVMVSG  
VHHKLNSELWKPEFRKEFGEQEVLDVNCRTNEIITGATVGFDFWDFEDVPNRLKNEKPMVLKLDWPP  
GEDFRDMMPSRFDLMAPIPLPEYTRRDGKLNLASRLPNYFVRPDLGPKMYNAYGLITPEDRKYGTTNLH  
LDVSDAANVMVYVGIKPGQCEQEEVLKTIQDGDSDDELTIKRFIEGKEKPGALWHIYAAKDTEKIREFLK  
KVSEEQGENPADHDPIHDQSWYLDRLSRKRLHQEYGVQGWAIQFLGDVVFIPAGAPHQVHNLYSICKV  
AEDFVSPEHVKHCFWLTQEFYLSQHTNHEDKLQVKNVIYHAVKDAVAMLKASESSFGPK

TRTRPLEQKLISEEDLAANDILDYKDDDDKV

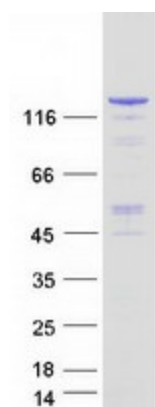
Tag:	C-Myc/DDK
Predicted MW:	147.2 kDa



[View online »](#)

<b>Concentration:</b>	>0.05 µg/µL as determined by microplate BCA method
<b>Purity:</b>	> 80% as determined by SDS-PAGE and Coomassie blue staining
<b>Buffer:</b>	25 mM Tris-HCl, 100 mM glycine, pH 7.3, 10% glycerol
<b>Preparation:</b>	NULL or Add: Recombinant proteins was captured through anti-DDK affinity column followed by conventional chromatography steps.
<b>Note:</b>	For testing in cell culture applications, please filter before use. Note that you may experience some loss of protein during the filtration process.
<b>Storage:</b>	Store at -80°C.
<b>Stability:</b>	Stable for 12 months from the date of receipt of the product under proper storage and handling conditions. Avoid repeated freeze-thaw cycles.
<b>RefSeq:</b>	<a href="#">NP_001140160</a>
<b>Locus ID:</b>	55818
<b>UniProt ID:</b>	<a href="#">Q9Y4C1</a>
<b>RefSeq Size:</b>	4638
<b>Cytogenetics:</b>	2p11.2
<b>RefSeq ORF:</b>	3963
<b>Synonyms:</b>	JHDM2A; JHMD2A; JMJD1; JMJD1A; TSGA
<b>Summary:</b>	This gene encodes a zinc finger protein that contains a jumonji domain and may play a role in hormone-dependent transcriptional activation. Alternative splicing results in multiple transcript variants. [provided by RefSeq, Apr 2009]

### Product images:



Coomassie blue staining of purified KDM3A protein (Cat# [TP329072]). The protein was produced from HEK293T cells transfected with KDM3A cDNA clone (Cat# [RC229072]) using MegaTran 2.0 (Cat# [TT210002]).