

Product datasheet for TP328886

BZW2 (NM_001159767) Human Recombinant Protein

Product data:

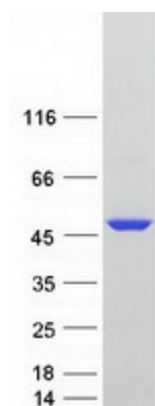
Product Type:	Recombinant Proteins
Description:	Recombinant protein of human basic leucine zipper and W2 domains 2 (BZW2), transcript variant 1, 20 µg
Species:	Human
Expression Host:	HEK293T
Expression cDNA Clone or AA Sequence:	>RC228886 protein sequence Red=Cloning site Green=Tags(s)
	<p>MNKHQKPVLTGQRFKTRKRDEKEKFEPTVFRDTLVQGLNEAGDDLEAVAKFLDSTGSRLDYRRYADTLFD ILVAGSMLAPGGTRIDDGDKTKMTNHCVFSANEDHETIRNYAQVFNKLIRRYKYLEKAFEDEMKLLFL KAFSETEQTKLAMLGILLGNGTLPATILTSLFTDSLVEKIAASFVAVKLFKAWMAEKDANSVTSRLKA NLDKRLLLELFPVNRQSVDFHAKYFTDAGLKEISDFLRVQQSLGTRKELQKELQERLSQECPIKEVWLYVK EEMKRNDLPETAVIGLLWTCIMNAVEWNNKEELVAEQALKHLKQYAPLLAVFSSQGQSELILLQKVQEYC YDNIHFMKAFQKIVWLFYKADVLSEEAILKWYKEAHVAKGKSVFLDQMKKFVEWLQNAEEEESEGEEN</p> <p>TRTRPLEQKLISEEDLAANDILDYKDDDDKV</p>
Tag:	C-Myc/DDK
Predicted MW:	48 kDa
Concentration:	>0.05 µg/µL as determined by microplate BCA method
Purity:	> 80% as determined by SDS-PAGE and Coomassie blue staining
Buffer:	25 mM Tris-HCl, 100 mM glycine, pH 7.3, 10% glycerol
Preparation:	NULL or Add: Recombinant proteins was captured through anti-DDK affinity column followed by conventional chromatography steps.
Note:	For testing in cell culture applications, please filter before use. Note that you may experience some loss of protein during the filtration process.
Storage:	Store at -80°C.
Stability:	Stable for 12 months from the date of receipt of the product under proper storage and handling conditions. Avoid repeated freeze-thaw cycles.
RefSeq:	<u>NP_001153239</u>



[View online »](#)

Locus ID:	28969
UniProt ID:	Q9Y6E2 , A0A024RA42
RefSeq Size:	1883
Cytogenetics:	7p21.1
RefSeq ORF:	1257
Synonyms:	HSPC028; MST017; MSTP017
Summary:	May be involved in neuronal differentiation.[UniProtKB/Swiss-Prot Function]

Product images:



Coomassie blue staining of purified BZW2 protein (Cat# TP328886). The protein was produced from HEK293T cells transfected with BZW2 cDNA clone (Cat# [RC228886]) using MegaTran 2.0 (Cat# [TT210002]).