

Product datasheet for TP328877M

GM CSF Receptor alpha (CSF2RA) (NM_001161529) Human Recombinant Protein

Product data:

Product Type:	Recombinant Proteins
Description:	Recombinant protein of human colony stimulating factor 2 receptor, alpha, low-affinity (granulocyte-macrophage) (CSF2RA), transcript variant 7, 100 µg
Species:	Human
Expression Host:	HEK293T
Expression cDNA Clone or AA Sequence:	>RC228877 protein sequence Red=Cloning site Green=Tags(s)

MLLLVTSLLLCELPHPAFLLIPEKSDLRTVAPASSLNVRFDSTMNLSWDCQENTTFSKCFLTDKKNRV
EPRLSNNECSCTFREICLHEGVTFEVHVNTSQRGFQKLLYPNSGREGTAAQNFSCFIYNADLMNCTWAR
GPTAPRDVQYFLYIRNSKRREIRCPYYIQDSGTHVGCILDNLGSLTSRNYFLVNGTSREIGIQFFDSLL
DTKKIERFNPPSNVTVRCNTTHCLVRWKQPRTYQKLSYLDYFQYQLDVHRKNTQPGTENLLINVSGDLENR
YNFPSSEPRAKHSVKIRAADVRLNWSSWSEAIEFGSDDGNLGSVYIYVLLIVGTLVCGIVLGLFKRFL
RIQRLFPVPQIKDKLNDNHEVEDEIIEWEFTPEEGKGYREEVLTVKEIT

TRTRPLEQKLISEEDLAANDILDYKDDDDKV

Tag:	C-Myc/DDK
Predicted MW:	44.1 kDa
Concentration:	>0.05 µg/µL as determined by microplate BCA method
Purity:	> 80% as determined by SDS-PAGE and Coomassie blue staining
Buffer:	25 mM Tris-HCl, 100 mM glycine, pH 7.3, 10% glycerol
Preparation:	NULL or Add: Recombinant proteins was captured through anti-DDK affinity column followed by conventional chromatography steps.
Note:	For testing in cell culture applications, please filter before use. Note that you may experience some loss of protein during the filtration process.
Storage:	Store at -80°C.
Stability:	Stable for 12 months from the date of receipt of the product under proper storage and handling conditions. Avoid repeated freeze-thaw cycles.
RefSeq:	<u>NP_001155001</u>



[View online »](#)

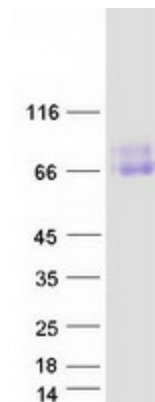
Locus ID:	1438
UniProt ID:	P15509
RefSeq Size:	1983
Cytogenetics:	X;Y
RefSeq ORF:	1200
Synonyms:	alphaGMR; CD116; CDw116; CSF2R; CSF2RAX; CSF2RAY; CSF2RX; CSF2RY; GM-CSF-R-alpha; GMCSFR; GMCSFR-alpha; GMR; GMR-alpha; SMDP4

Summary: The protein encoded by this gene is the alpha subunit of the heterodimeric receptor for colony stimulating factor 2, a cytokine which controls the production, differentiation, and function of granulocytes and macrophages. The encoded protein is a member of the cytokine family of receptors. This gene is found in the pseudoautosomal region (PAR) of the X and Y chromosomes. Multiple transcript variants encoding different isoforms have been found for this gene, with some of the isoforms being membrane-bound and others being soluble. [provided by RefSeq, Jul 2008]

Protein Families: Druggable Genome, Secreted Protein, Transmembrane

Protein Pathways: Cytokine-cytokine receptor interaction, Hematopoietic cell lineage, Jak-STAT signaling pathway, Pathways in cancer

Product images:



Coomassie blue staining of purified CSF2RA protein (Cat# [TP328877]). The protein was produced from HEK293T cells transfected with CSF2RA cDNA clone (Cat# [RC228877]) using MegaTran 2.0 (Cat# [TT210002]).