

Product datasheet for TP328853M

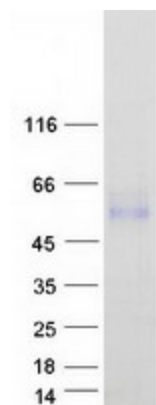
LRTM2 (NM_001163925) Human Recombinant Protein

Product data:

Product Type:	Recombinant Proteins
Description:	Recombinant protein of human leucine-rich repeats and transmembrane domains 2 (LRTM2), transcript variant 2, 100 µg
Species:	Human
Expression Host:	HEK293T
Expression cDNA	>RC228853 representing NM_001163925
Clone or AA Sequence:	Red=Cloning site Green=Tags(s)
	<p>MLAPGSSPGQRGRLLQWRQVSWITCWIALYAVEALPTCPFSCCKDSRSLEVDCSGLGLTTVPPDVPAAT RTLLLLNNKLSALPSWAFANLSSLQRLDLSNNFLDRLPRIFGDLTNLTQLRNNISIRTLDRDLLRHSP LLRHLDLSINGLAQLPPGLFDGLLALRSLSLRSNRLQNLDRLTFEPLANLQLLQVGDNPWECDCNLREFK HWMEWFSYRGGRDLQACTLPKELRGKDMRMVPMEMFNYSQLEDENSSAGLDIPGPPCTKASPEPAKPK PGAEPPEPSTACPQKQRHRPASVRRAMGTVIIAGVVCVVCMIMMWAAAYGCIYASLMAKYHRELKKRQ PLMGDPEGEHEDQKQISSVA</p> <p>TRTRPLEQKLISEEDLAANDILDYKDDDDKV</p>
Tag:	C-Myc/DDK
Predicted MW:	41 kDa
Concentration:	>0.05 µg/µL as determined by microplate BCA method
Purity:	> 80% as determined by SDS-PAGE and Coomassie blue staining
Buffer:	25 mM Tris-HCl, 100 mM glycine, pH 7.3, 10% glycerol
Preparation:	NULL or Add: Recombinant proteins was captured through anti-DDK affinity column followed by conventional chromatography steps.
Note:	For testing in cell culture applications, please filter before use. Note that you may experience some loss of protein during the filtration process.
Storage:	Store at -80°C.
Stability:	Stable for 12 months from the date of receipt of the product under proper storage and handling conditions. Avoid repeated freeze-thaw cycles.
RefSeq:	<u>NP_001157397</u>


[View online »](#)

Locus ID: 654429
UniProt ID: [Q8N967](#)
Cytogenetics: 12p13.33
RefSeq ORF: 1110
Protein Families: Transmembrane

Product images:


Coomassie blue staining of purified LRTM2 protein (Cat# [TP328853]). The protein was produced from HEK293T cells transfected with LRTM2 cDNA clone (Cat# [RC228853]) using MegaTran 2.0 (Cat# [TT210002]).