

Product datasheet for **TP328853**

LRTM2 (NM_001163925) Human Recombinant Protein

Product data:

| | |
|-----------------------|--|
| Product Type: | Recombinant Proteins |
| Description: | Recombinant protein of human leucine-rich repeats and transmembrane domains 2 (LRTM2), transcript variant 2, 20 µg |
| Species: | Human |
| Expression Host: | HEK293T |
| Expression cDNA | >RC228853 representing NM_001163925 |
| Clone or AA Sequence: | Red=Cloning site Green=Tags(s) |

MLAPGSSPGQRGRLLALQWRQVSWITCWIALYAVEALPTCPFSCCKDSRSLEVDCSGLGLTTVPPDVPAAT
RTLLLLNKNLSALPSWAFANLSSLQRLDLSNFDRLPRIFGDLTNLTELQLRNNSIRTLDRDLLRHSP
LLRHLDLSINGLAQLPPGLFDGLLALRSLSLRSNRLQNLDRLTFEPLANLQLLQVGDNPWECDCNLREFK
HWMEWFSYRGGRLDQLACTLPKELRGKDMRMVPMEMFNYSQLEDENSSAGLDIPGPPCTKASPEPAKPK
PGAEPPEPSTACPQKQRHRPASVRRAMGTVIIAGVVCVVCCIMMWAAAYGCIYASLMAKYHRELKKRQ
PLMGDPEGEHEDQKQISSVA

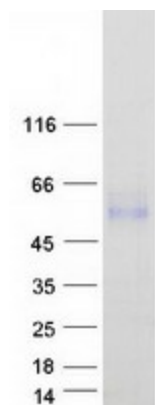
TRTRPLEQKLISEEDLAANDILDYKDDDDKV

| | |
|----------------|--|
| Tag: | C-Myc/DDK |
| Predicted MW: | 41 kDa |
| Concentration: | >0.05 µg/µL as determined by microplate BCA method |
| Purity: | > 80% as determined by SDS-PAGE and Coomassie blue staining |
| Buffer: | 25 mM Tris-HCl, 100 mM glycine, pH 7.3, 10% glycerol |
| Preparation: | NULL or Add: Recombinant proteins was captured through anti-DDK affinity column followed by conventional chromatography steps. |
| Note: | For testing in cell culture applications, please filter before use. Note that you may experience some loss of protein during the filtration process. |
| Storage: | Store at -80°C. |
| Stability: | Stable for 12 months from the date of receipt of the product under proper storage and handling conditions. Avoid repeated freeze-thaw cycles. |
| RefSeq: | NP_001157397 |



[View online »](#)

Locus ID: 654429
UniProt ID: [Q8N967](#)
Cytogenetics: 12p13.33
RefSeq ORF: 1110
Protein Families: Transmembrane

Product images:

Coomassie blue staining of purified LRTM2 protein (Cat# TP328853). The protein was produced from HEK293T cells transfected with LRTM2 cDNA clone (Cat# [RC228853]) using MegaTran 2.0 (Cat# [TT210002]).