

Product datasheet for **TP328815L**

TBX20 (NM_001166220) Human Recombinant Protein

Product data:

Product Type:	Recombinant Proteins
Description:	Recombinant protein of human T-box 20 (TBX20), transcript variant 2, 1 mg
Species:	Human
Expression Host:	HEK293T
Expression cDNA Clone or AA Sequence:	>RC228815 protein sequence Red =Cloning site Green =Tags(s)
	 MEFTASPKPQLSSRANAFSIAALMSSGGGSKEKEATENTIKPLEQFVEKSSCAQPLGELTS LDAHGFEFGG SGSSPSSSLCTEPLIPTTPIIPSEEMAKIACSLETKELWDKFHELGTEMIITKSGRRMFPTIRVSFSGV DPEAKYIVLMDIVPVDNKRYRYAYHRSSWL VAGKADPPLPARLYVHPDSPFTGEQLLKQMVSEFKVCLTN NELDQHGHIILNSMHKYQPRVHIIKKKDHTASLLNLKSEEFRTFIFPETVFTAVTAYQNQLITKLKIDSN PFAKGRDSSRLTDIER TRTRPLEQKLISEEDLAANDILDYKDDDDKV
Tag:	C-Myc/DDK
Predicted MW:	33 kDa
Concentration:	>0.05 µg/µL as determined by microplate BCA method
Purity:	> 80% as determined by SDS-PAGE and Coomassie blue staining
Buffer:	25 mM Tris-HCl, 100 mM glycine, pH 7.3, 10% glycerol
Preparation:	NULL or Add: Recombinant proteins was captured through anti-DDK affinity column followed by conventional chromatography steps.
Note:	For testing in cell culture applications, please filter before use. Note that you may experience some loss of protein during the filtration process.
Storage:	Store at -80°C.
Stability:	Stable for 12 months from the date of receipt of the product under proper storage and handling conditions. Avoid repeated freeze-thaw cycles.
RefSeq:	NP_001159692
Locus ID:	57057



[View online »](#)

UniProt ID: [Q9UMR3](#)

RefSeq Size: 1374

Cytogenetics: 7p14.2

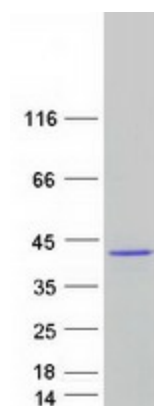
RefSeq ORF: 892

Synonyms: ASD4

Summary: This gene encodes a T-box family member. The T-box family members share a common DNA binding domain, termed the T-box, and they are transcription factors involved in the regulation of developmental processes. This gene is essential for heart development. Mutations in this gene are associated with diverse cardiac pathologies, including defects in septation, valvulogenesis and cardiomyopathy. Alternatively spliced transcript variants encoding different isoforms have been found for this gene. [provided by RefSeq, Oct 2009]

Protein Families: Transcription Factors

Product images:



Coomassie blue staining of purified TBX20 protein (Cat# [TP328815]). The protein was produced from HEK293T cells transfected with TBX20 cDNA clone (Cat# [RC228815]) using MegaTran 2.0 (Cat# [TT210002]).