

Product datasheet for **TP328768**

Prolactin (PRL) (NM_001163558) Human Recombinant Protein

Product data:

Product Type: Recombinant Proteins

Description: Recombinant protein of human prolactin (PRL), transcript variant 2, 20 µg

Species: Human

Expression Host: HEK293T

Expression cDNA Clone
or AA Sequence: >RC228768 protein sequence
Red=Cloning site **Green**=Tags(s)

MNIKGSPWKGSLLLLLVSNLLLCQSVAPLPICPGGAARCQVTLRDLFDRAVVLSHYIHNLSEMFSEFDK
RYTHGRGFITKAINSCHTSSLATPEDKEQAQQMNQKDFLSLIVSILRSWNEPLYHLVTEVRGMQEAPAI
LSKAVEIEEQTKRLLGEMELIVSQVHPETKENEIYPVWSGLPSLQMADEESRLSAYYNLLHCLRRDSHKI
DNYLKLLKCRHHNNC

TRTRPLEQKLISEEDLAANDILDYKDDDDKV

Tag: C-Myc/DDK

Predicted MW: 22.8 kDa

Concentration: >0.05 µg/µL as determined by microplate BCA method

Purity: > 80% as determined by SDS-PAGE and Coomassie blue staining

Buffer: 25 mM Tris-HCl, 100 mM glycine, pH 7.3, 10% glycerol

Preparation: NULL or Add: Recombinant proteins was captured through anti-DDK affinity column followed by conventional chromatography steps.

Note: For testing in cell culture applications, please filter before use. Note that you may experience some loss of protein during the filtration process.

Storage: Store at -80°C.

Stability: Stable for 12 months from the date of receipt of the product under proper storage and handling conditions. Avoid repeated freeze-thaw cycles.

RefSeq: [NP_001157030](#)

Locus ID: 5617

UniProt ID: [P01236](#), [Q5THQ0](#)



[View online »](#)

RefSeq Size: 1043

Cytogenetics: 6p22.3

RefSeq ORF: 681

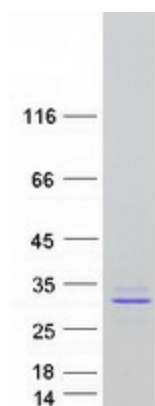
Synonyms: GHA1

Summary: This gene encodes the anterior pituitary hormone prolactin. This secreted hormone is a growth regulator for many tissues, including cells of the immune system. It may also play a role in cell survival by suppressing apoptosis, and it is essential for lactation. Alternative splicing results in multiple transcript variants that encode the same protein. [provided by RefSeq, Aug 2011]

Protein Families: Druggable Genome, Secreted Protein

Protein Pathways: Cytokine-cytokine receptor interaction, Jak-STAT signaling pathway, Neuroactive ligand-receptor interaction

Product images:



Coomassie blue staining of purified PRL protein (Cat# TP328768). The protein was produced from HEK293T cells transfected with PRL cDNA clone (Cat# [RC228768]) using MegaTran 2.0 (Cat# [TT210002]).