

## Product datasheet for **TP328765L**

### **NNT1 (CLCF1) (NM\_001166212) Human Recombinant Protein**

#### Product data:

Product Type:	Recombinant Proteins
Description:	Purified recombinant protein of Homo sapiens cardiotrophin-like cytokine factor 1 (CLCF1), transcript variant 2, 1 mg
Species:	Human
Expression Host:	HEK293T
Expression cDNA Clone or AA Sequence:	>RC228765 representing NM_001166212 <b>Red</b> =Cloning site <b>Green</b> =Tags(s)  MDLRAGDSWGMLACLCTVLWHLPAVPALNRTGDPGPGPSIQKTYDLTRYLEHQLRSLAGTYLNYLGPPFN EPDFNPPRLGAETLPRATVDLEWVWRLNDKLRRLTQNYEAYSHLLCYLRGLNRQAATAELRRSLAHFCTSL QGLLSGIAGVMAALGYPLPQPLPGTEPTWTPGPAHSDFLQKMDDFWLLKELQTLWWSAKDFNRLKKKMQ PPAAAVTLHLGAHGF  <b>TRTRPLEQKLISEEDLAANDILDYKDDDDKV</b>
Tag:	C-Myc/DDK
Predicted MW:	23.9 kDa
Concentration:	>0.05 µg/µL as determined by microplate BCA method
Purity:	> 80% as determined by SDS-PAGE and Coomassie blue staining
Buffer:	25 mM Tris-HCl, 100 mM glycine, pH 7.3, 10% glycerol
Preparation:	NULL or Add: Recombinant proteins was captured through anti-DDK affinity column followed by conventional chromatography steps.
Note:	For testing in cell culture applications, please filter before use. Note that you may experience some loss of protein during the filtration process.
Storage:	Store at -80°C.
Stability:	Stable for 12 months from the date of receipt of the product under proper storage and handling conditions. Avoid repeated freeze-thaw cycles.
RefSeq:	<a href="#">NP_001159684</a>
Locus ID:	23529



[View online »](#)

UniProt ID: [Q9UBD9](#), [Q9UBD9-2](#)

Cytogenetics: 11q13.2

RefSeq ORF: 675

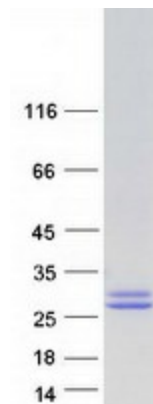
Synonyms: BSF-3; BSF3; CISS2; CLC; NNT-1; NNT1; NR6

**Summary:** This gene is a member of the glycoprotein (gp)130 cytokine family and encodes cardiotrophin-like cytokine factor 1 (CLCF1). CLCF1 forms a heterodimer complex with cytokine receptor-like factor 1 (CRLF1). This dimer competes with ciliary neurotrophic factor (CNTF) for binding to the ciliary neurotrophic factor receptor (CNTFR) complex, and activates the Jak-STAT signaling cascade. CLCF1 can be actively secreted from cells by forming a complex with soluble type I CRLF1 or soluble CNTFR. CLCF1 is a potent neurotrophic factor, B-cell stimulatory agent and neuroendocrine modulator of pituitary corticotroph function. Defects in CLCF1 cause cold-induced sweating syndrome 2 (CISS2). This syndrome is characterized by a profuse sweating after exposure to cold as well as congenital physical abnormalities of the head and spine. Alternative splicing results in multiple transcript variants encoding distinct isoforms.[provided by RefSeq, Oct 2009]

**Protein Families:** Druggable Genome, Secreted Protein

**Protein Pathways:** Cytokine-cytokine receptor interaction, Jak-STAT signaling pathway

### Product images:



Coomassie blue staining of purified CLCF1 protein (Cat# [TP328765]). The protein was produced from HEK293T cells transfected with CLCF1 cDNA clone (Cat# [RC228765]) using MegaTran 2.0 (Cat# [TT210002]).