

Product datasheet for **TP328758M**

LTA (NM_001159740) Human Recombinant Protein

Product data:

Product Type:	Recombinant Proteins
Description:	Recombinant protein of human lymphotoxin alpha (TNF superfamily, member 1) (LTA), transcript variant 1, 100 µg
Species:	Human
Expression Host:	HEK293T
Expression cDNA Clone or AA Sequence:	>RC228758 protein sequence Red =Cloning site Green =Tags(s)
	<p>MTPPERLFLPRVRGTTLHLLLLGLLLVLPGAQGLPGVGLTPSAAQTARQHPKMHLAHSTLKPA AHLIGD PSKQNSLLWRANTDRAFLQDGFSLSNNSLLVPTSGIYFVYSQVWVSGKAYSPKATSSPLYLAHEVQLFSS QYPFHVPLLSSQKMVYPGLQEPWLHSMYHGAAFQLTQGDQLSTHTDGIPLVLSPSTVFFGAFAL</p> <p>TRTRPLEQKLISEEDLAANDILDYKDDDDKV</p>
Tag:	C-Myc/DDK
Predicted MW:	18.6 kDa
Concentration:	>0.05 µg/µL as determined by microplate BCA method
Purity:	> 80% as determined by SDS-PAGE and Coomassie blue staining
Buffer:	25 mM Tris-HCl, 100 mM glycine, pH 7.3, 10% glycerol
Preparation:	NULL or Add: Recombinant proteins was captured through anti-DDK affinity column followed by conventional chromatography steps.
Note:	For testing in cell culture applications, please filter before use. Note that you may experience some loss of protein during the filtration process.
Storage:	Store at -80°C.
Stability:	Stable for 12 months from the date of receipt of the product under proper storage and handling conditions. Avoid repeated freeze-thaw cycles.
RefSeq:	NP_001153212
Locus ID:	4049
UniProt ID:	P01374 , Q5STV3



[View online »](#)

RefSeq Size: 1474

Cytogenetics: 6p21.33

RefSeq ORF: 615

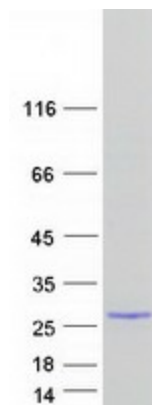
Synonyms: LT; TNFB; TNFSF1; TNLG1E

Summary: The encoded protein, a member of the tumor necrosis factor family, is a cytokine produced by lymphocytes. The protein is highly inducible, secreted, and forms heterotrimers with lymphotoxin-beta which anchor lymphotoxin-alpha to the cell surface. This protein also mediates a large variety of inflammatory, immunostimulatory, and antiviral responses, is involved in the formation of secondary lymphoid organs during development and plays a role in apoptosis. Genetic variations in this gene are associated with susceptibility to leprosy type 4, myocardial infarction, non-Hodgkin's lymphoma, and psoriatic arthritis. Alternatively spliced transcript variants have been observed for this gene. [provided by RefSeq, Jul 2012]

Protein Families: Druggable Genome, Secreted Protein, Transmembrane

Protein Pathways: Antigen processing and presentation, Cytokine-cytokine receptor interaction, Type I diabetes mellitus

Product images:



Coomassie blue staining of purified LTA protein (Cat# [TP328758]). The protein was produced from HEK293T cells transfected with LTA cDNA clone (Cat# [RC228758]) using MegaTran 2.0 (Cat# [TT210002]).