

Product datasheet for **TP328736**

alpha Synuclein (SNCA) (NM_001146055) Human Recombinant Protein

Product data:

Product Type:	Recombinant Proteins
Description:	Recombinant protein of human synuclein, alpha (non A4 component of amyloid precursor) (SNCA), transcript variant 3, 20 µg
Species:	Human
Expression Host:	HEK293T
Expression cDNA Clone or AA Sequence:	>RC228736 representing NM_001146055 Red =Cloning site Green =Tags(s) MDVFMKGLSKAKEGVAAAETKQGVAAEAGKTKEGVLYVGSKTKEGVHGVATVAEKTKEQVTNVGGAV VTGVTAVAQKTVEGAGSIAAATGFVKKDKLGKNEEGAPQEGILEDMPVDPDNEAYEMPSEEGYQDYEPEA TRTRPLEQKLISEEDLAANDILDYKDDDDKV
Tag:	C-Myc/DDK
Predicted MW:	14.3 kDa
Concentration:	>0.05 µg/µL as determined by microplate BCA method
Purity:	> 80% as determined by SDS-PAGE and Coomassie blue staining
Buffer:	25 mM Tris-HCl, 100 mM glycine, pH 7.3, 10% glycerol
Preparation:	NULL or Add: Recombinant proteins was captured through anti-DDK affinity column followed by conventional chromatography steps.
Note:	For testing in cell culture applications, please filter before use. Note that you may experience some loss of protein during the filtration process.
Storage:	Store at -80°C.
Stability:	Stable for 12 months from the date of receipt of the product under proper storage and handling conditions. Avoid repeated freeze-thaw cycles.
RefSeq:	<u>NP_001139527</u>
Locus ID:	6622
UniProt ID:	<u>P37840</u>



[View online »](#)

Cytogenetics: 4q22.1

RefSeq ORF: 420

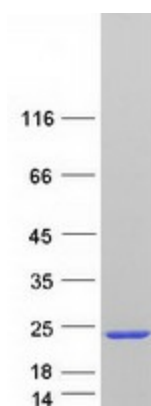
Synonyms: NACP; PARK1; PARK4; PD1

Summary: Alpha-synuclein is a member of the synuclein family, which also includes beta- and gamma-synuclein. Synucleins are abundantly expressed in the brain and alpha- and beta-synuclein inhibit phospholipase D2 selectively. SNCA may serve to integrate presynaptic signaling and membrane trafficking. Defects in SNCA have been implicated in the pathogenesis of Parkinson disease. SNCA peptides are a major component of amyloid plaques in the brains of patients with Alzheimer's disease. Alternatively spliced transcripts encoding different isoforms have been identified for this gene. [provided by RefSeq, Feb 2016]

Protein Families: Druggable Genome

Protein Pathways: Alzheimer's disease, Parkinson's disease

Product images:



Coomassie blue staining of purified SNCA protein (Cat# TP328736). The protein was produced from HEK293T cells transfected with SNCA cDNA clone (Cat# [RC228736]) using MegaTran 2.0 (Cat# [TT210002]).