

Product datasheet for TP328678L

NTE (PNPLA6) (NM_001166111) Human Recombinant Protein

Product data:

Product Type: Recombinant Proteins
Description: Recombinant protein of human patatin-like phospholipase domain containing 6 (PNPLA6), transcript variant 1, 1 mg
Species: Human
Expression Host: HEK293T
Expression cDNA Clone or AA Sequence: >RC228678 representing NM_001166111
Red=Cloning site Green=Tags(s)

MEAPLQTGMMGTSSHGLATNSSGAKVAERDGFQDVLAPGEGSAGRICGAQPVPFVPPQVLGVMIGAGVAV
 VTAVLILLVRRRLRVPKTPAPDGPYRFRKRDKVLFYGRKIMRKVSQSTSSLVDTSVSATSRPRMRKCLK
 MLNIAKKILRIQKETPTLQRKEPPPAVLEADLTEGDLANSHLPSEVLYMLKNVRVLGHFEKPLFLELCRH
 MVFQRLGQGDYVFRPGQPDASIYVVDGLLELCLPGPDGKECVWKEVPGDSVNSLLSILDVITGHQHPQ
 RTVSARAARDSTVLRPVEAFSAVFTKYPESLVRVQIIMVRLQRVTFALHNYLGLTNELFSHEIQPLR
 LFPSGPLTRTSPVRGSKRMVSTSATDEPRETPGRPPDPTGAPLPGTGDVPVKPTSLETSPAPLLSRCVS
 MPGDISGLQGGPRSDFDMAYERGRISVSLQEEASGGSLAAPARTPTQEPREQPAGACEYSYCEDESATGG
 CPGFPYQGRQTSSIFEAAKQELAKLMRIEDPSLLNSRVLLHHAAGTIIARQGDQDVSLLHFLVWGCLHVV
 QRMIDKAEDVCLFVAQPGEVGLVQLAVLTGEPLIFTLRAQRDCTFLRISKSDFYEIMRAQPSVLSAAHTV
 AARMSPFVRQMDFAIDWTAVEAGRALYRQGRSDCTYIVLNGRLRSVIQRGSGKELVGEYGRGDLIGV
 EALTRQPRATTVHAVRDETELAKLPEGTLGHIKRRYPQVTRLIHLLSQKILGNLQQLQGPFPAGSGLGVP
 PHSELTNPASNLATVAILPVCAEVPMAFTLELQHALQAIGPTLLLNSDIIRARLGASALDSIQEFRLSG
 WLAQQEDAHRIVLYQTDASLTPWTVRCLRQADCILIVGLGDQEPTLGQLEQMLENTAVRALKQLVLLHRE
 EGAGPTRTVEWLNMRWSCGHLHLRCPRLFSRRSPAKLHELVEKVFRRADRHSDFSRLARVLTGNTIA
 LVLGGGGARGCSHIGVLKALEEAGVPVDLVGGTSIGSFIGALYAEERSASRTKQRAREWAKSMTSVLEPV
 LDLYTPVTSMTGSAFNRSIHRVFQDKQIEDLWLPYFNVTDDITASAMRVHKDGLWRYVRASMTLSGYL
 PPLCDPKDGHLLMDGGYINNLPADIARSMGAKTVIAIDVGSQDETDLSTYGDLSGWWLLWKRLNPWADK
 VKVPDMAEQSRLAYVSCVRQLEVVKSSSYCEYLRPPIDCFKTMDFGKFDQIYDVGYQYGKAVFGGWSRG
 NVIEKMLTDRRSTDLNESRRADVLAFSSGFTDLAEIVSRIEPPTSYVSDGCADGEESDCLTEYEEDAGP
 DCSRDEGGSPGASPTASEMEEKSIILRQRCLPQEPGSGATDA

TRTRPLEQKLISEEDLAANDILDYKDDDDKV

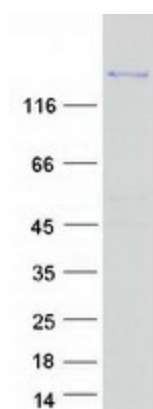
Tag: C-Myc/DDK
Predicted MW: 150.8 kDa



[View online »](#)

Concentration:	>0.05 µg/µL as determined by microplate BCA method
Purity:	> 80% as determined by SDS-PAGE and Coomassie blue staining
Buffer:	25 mM Tris-HCl, 100 mM glycine, pH 7.3, 10% glycerol
Preparation:	NULL or Add: Recombinant proteins was captured through anti-DDK affinity column followed by conventional chromatography steps.
Note:	For testing in cell culture applications, please filter before use. Note that you may experience some loss of protein during the filtration process.
Storage:	Store at -80°C.
Stability:	Stable for 12 months from the date of receipt of the product under proper storage and handling conditions. Avoid repeated freeze-thaw cycles.
RefSeq:	NP_001159583
Locus ID:	10908
UniProt ID:	Q8IY17
Cytogenetics:	19p13.2
RefSeq ORF:	4125
Synonyms:	BNHS; iPLA2delta; LNMS; NTE; NTEMND; OMCS; SPG39; sws
Summary:	This gene encodes a phospholipase that deacetylates intracellular phosphatidylcholine to produce glycerophosphocholine. It is thought to function in neurite outgrowth and process elongation during neuronal differentiation. The protein is anchored to the cytoplasmic face of the endoplasmic reticulum in both neurons and non-neuronal cells. Mutations in this gene result in autosomal recessive spastic paraplegia, and the protein is the target for neurodegeneration induced by organophosphorus compounds and chemical warfare agents. Multiple transcript variants encoding different isoforms have been found for this gene. [provided by RefSeq, Oct 2009]
Protein Families:	Transmembrane

Product images:



Coomassie blue staining of purified PNPLA6 protein (Cat# [TP328678]). The protein was produced from HEK293T cells transfected with PNPLA6 cDNA clone (Cat# [RC228678]) using MegaTran 2.0 (Cat# [TT210002]).