

## Product datasheet for TP328606

### SAPS3 (PPP6R3) (NM\_001164160) Human Recombinant Protein

#### Product data:

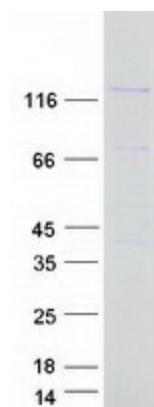
Product Type:	Recombinant Proteins
Description:	Recombinant protein of human protein phosphatase 6, regulatory subunit 3 (PPP6R3), transcript variant 4, 20 µg
Species:	Human
Expression Host:	HEK293T
Expression cDNA Clone or AA Sequence:	>RC228606 representing NM_001164160 Red=Cloning site Green=Tags(s)
	<p>MFWKFDLHSSSHIDTLLEREDVTLKELMDEEDVLQECKAQRKLIIEFLLKAECLDLVSFIIIEPPQDMD EKIRYKYPNISCELLTSDVSMNDRLGEDESLLMKLYSFLNDSPLNPLLASFFSKVLSILSRKPEQIV DFLKKKHDFVDLIIKHIGTSAIMDLLRLLTCIEPPQPRQDVLNWLNEEKIQRVVEIVHPSQEEDRHSN ASQSLCEIVRLSRDQMLQIQNSTEPDPLLATLEKQEIIQLLSNIFHKEKNESAIVSAIQILLTLETRR PTFEGHIEICPPGMSHSACSVNKSVEAIRGRLGSFHELLLEPPKKSVMKTTWGVLDPPVGNTRLNVIRL ISSLLQNTSSINGDLMELNSIGVILNMFYKWTWNNFLHTQVEICIALILASPFENTENATITDQDSTGD NLLLKHLFQKCQLIERILEAWEMNEKKQAEGRRRHGYMGHLTRIANCIVHSTDKGPNSALVQQLIKDLPD EVRERWETFCTSSLGETNKRNTVDLVTTCIHSSSDDEIDFKETGFSQDSSLQQAQFSDYQMQMSTSNFID QFGFNDEKQDDIGNVSFDRVSDINFTLNTNESGNIALFEACCKERIQFDDGGSDDEEDIWEEKHIAF TPESQRRSSSGSTDSEESTDSEEDGAKQDLFEPSSANTEDKMEVDLSEPPNWSANFDVPMETTHGAPLD SVGSDVWSTEEPMPKTKETGWASFSEFTSSLTKDSLRSNSPVEMETSTEPMDPLTPSAAALAVQPEAAGS VAMEASSDGEEDAESTDKVTETVMNGGMKETLSLTVDAKTETAVFKRVLSYREEGKLSTSQDAACKDAE ECPETAETAKCAAPRPPSSSPEQRTGQPSAPGDTSVNGPV</p> <p>TRTRPLEQKLISEEDLAANDILDYKDDDDKV</p>
Tag:	C-Myc/DDK
Predicted MW:	98.3 kDa
Concentration:	>0.05 µg/µL as determined by microplate BCA method
Purity:	> 80% as determined by SDS-PAGE and Coomassie blue staining
Buffer:	25 mM Tris-HCl, 100 mM glycine, pH 7.3, 10% glycerol
Preparation:	NULL or Add: Recombinant proteins was captured through anti-DDK affinity column followed by conventional chromatography steps.



[View online »](#)

<b>Note:</b>	For testing in cell culture applications, please filter before use. Note that you may experience some loss of protein during the filtration process.
<b>Storage:</b>	Store at -80°C.
<b>Stability:</b>	Stable for 12 months from the date of receipt of the product under proper storage and handling conditions. Avoid repeated freeze-thaw cycles.
<b>RefSeq:</b>	<a href="#">NP_001157632</a>
<b>Locus ID:</b>	55291
<b>UniProt ID:</b>	<a href="#">Q5H9R7</a>
<b>Cytogenetics:</b>	11q13.2
<b>RefSeq ORF:</b>	2637
<b>Synonyms:</b>	C11orf23; PP6R3; SAP190; SAPL; SAPLa; SAPS3
<b>Summary:</b>	Protein phosphatase regulatory subunits, such as SAPS3, modulate the activity of protein phosphatase catalytic subunits by restricting substrate specificity, recruiting substrates, and determining the intracellular localization of the holoenzyme. SAPS3 is a regulatory subunit for the protein phosphatase-6 catalytic subunit (PPP6C; MIM 612725) (Stefansson and Brautigan, 2006 [PubMed 16769727]).[supplied by OMIM, Nov 2010]

### Product images:



Coomassie blue staining of purified PPP6R3 protein (Cat# TP328606). The protein was produced from HEK293T cells transfected with PPP6R3 cDNA clone (Cat# [RC228606]) using MegaTran 2.0 (Cat# [TT210002]).