

## Product datasheet for TP328572L

### PYGM (NM\_001164716) Human Recombinant Protein

#### Product data:

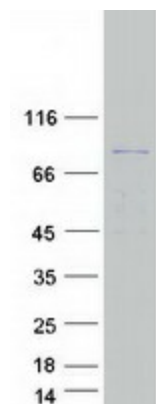
Product Type:	Recombinant Proteins
Description:	Recombinant protein of human phosphorylase, glycogen, muscle (PYGM), transcript variant 2, 1 mg
Species:	Human
Expression Host:	HEK293T
Expression cDNA Clone or AA Sequence:	>RC228572 representing NM_001164716 Red=Cloning site Green=Tags(s)
	MSRPLSDQEKRKQISVRGLAGVENVTELVKKNFNRHLHFTLVKDRNVATPRDYFALAHTVRDHLVGRWIR TQQHYEKPDKKISGGWQMEEADDWLRYGNPWEKARPEFTLPVHFYGHVEHTSQGAKWVDTQVVLAMPYD TPVPGYRNNVNTMRLWSAKAPNDFNLKDFNVGGYIQAVLDRNLAENISRVLYPNDNFFEGKELRLKQEY FVAATLQDIIRRFKSSKFGCRDPVRTNFDAFPDKVAIQLNDRHPSLAPELMRILVDLERMDWDKAWDV TVRTCAYTNHTVLPALERWPVHLLTLLPRHLQIIEINQRFLNRVAAAFPGDVDRLRMSLVEEGAVK RINMAHLCIAGSHAVNGVARIHSEILKKTIFKDFYELEPHKFKQNKTNGITPRRWLVLCNPGLAEVIAERI GEDFISDLQLRKLLSFVDDEAFIRDVAKVKQENKLFKFAAYLREYKVVHINPNSLFDIQVKRIHEYKRQL LNCLHVITLYNRIKREPKNFFVPRVTMIGGKAAPGYHMAKMIIRLVTAIGDVVNHDPVAVGDRLRVIFLEN YRVSLAEKVIPAADLSEQISTAGTEASGTGNMKFMLNGALTIGTMDGANVEMAEAEAGEENFFIFGMRVED VDKLDQRGYNAQEYDRIPELRQVIEQLSSGFFSPKQPDLFKDIVNMLMHHDREFKVFADYEDYIKCQEKV SALYKNPREWTRMIRNIATSGKFSSDRTIAQYAREIWGVPSRQRLPAPDEAI
	TRTRPLEQKLISEEDLAANDILDYKDDDDKV
Tag:	C-Myc/DDK
Predicted MW:	87.1 kDa
Concentration:	>0.05 µg/µL as determined by microplate BCA method
Purity:	> 80% as determined by SDS-PAGE and Coomassie blue staining
Buffer:	25 mM Tris-HCl, 100 mM glycine, pH 7.3, 10% glycerol
Preparation:	NULL or Add: Recombinant proteins was captured through anti-DDK affinity column followed by conventional chromatography steps.
Note:	For testing in cell culture applications, please filter before use. Note that you may experience some loss of protein during the filtration process.



[View online »](#)

<b>Storage:</b>	Store at -80°C.
<b>Stability:</b>	Stable for 12 months from the date of receipt of the product under proper storage and handling conditions. Avoid repeated freeze-thaw cycles.
<b>RefSeq:</b>	<a href="#">NP_001158188</a>
<b>Locus ID:</b>	5837
<b>UniProt ID:</b>	<a href="#">P11217</a>
<b>Cytogenetics:</b>	11q13.1
<b>RefSeq ORF:</b>	2262
<b>Synonyms:</b>	GSD5
<b>Summary:</b>	This gene encodes a muscle enzyme involved in glycogenolysis. Highly similar enzymes encoded by different genes are found in liver and brain. Mutations in this gene are associated with McArdle disease (myophosphorylase deficiency), a glycogen storage disease of muscle. Alternative splicing results in multiple transcript variants.[provided by RefSeq, Sep 2009]
<b>Protein Families:</b>	Druggable Genome
<b>Protein Pathways:</b>	Insulin signaling pathway, Starch and sucrose metabolism

### Product images:



Coomassie blue staining of purified PYGM protein (Cat# [TP328572]). The protein was produced from HEK293T cells transfected with PYGM cDNA clone (Cat# [RC228572]) using MegaTran 2.0 (Cat# [TT210002]).