

Product datasheet for **TP328572**

PYGM (NM_001164716) Human Recombinant Protein

Product data:

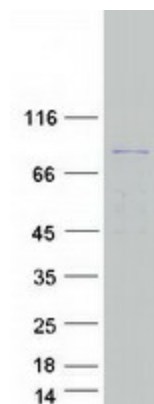
Product Type:	Recombinant Proteins
Description:	Recombinant protein of human phosphorylase, glycogen, muscle (PYGM), transcript variant 2, 20 µg
Species:	Human
Expression Host:	HEK293T
Expression cDNA Clone or AA Sequence:	>RC228572 representing NM_001164716 Red =Cloning site Green =Tags(s)
	<p>MSRPLSDQEKRKQISVRGLAGVENVTELVKKNFNRHLHFTLVKDRNVATPRDYYFALAHTVRDHLVGRWIR TQQHYEKPDKKISGGWQMEEADDWLRYGNPWEKARPEFTLPVHFYGHVEHTSQGAKWVDTQVVLAMPYD TPVPGYRNNVNTMRLWSAKAPNDFNLKDFNVGGYIQAVLDRNLAENISRVLYPNDNFFEGKELRLKQEY FVAATLQDIIRRFKSSKFGCRDPVRTNFDAFPDKVAIQLNDRHPSLAPELMRILVDLERMDWDKAWDV TVRTCAYTNHTVLPALERWPVHLLTLLPRHLQIIEINQRFLNRVAAAFPGDVDRLRMSLVEEGAVK RINMAHLCIAGSHAVNGVARIHSEILKKTIFKDFYELEPHKFQNKTNGITPRRWLVLCNPGLAEVIAERI GEDFISDLQLRKLLSFVDDEAFIRDVAKVKQENKLFKFAAYLREYKVVHINPNSLFDIQVKRIHEYKRQL LNCLHVITLYNRIKREPKNFFVPRVTMIGGKAAPGYHMAKMIIRLVTAIGDVVNHDPVAGDRLRVIFLEN YRVSLAEKVIPAADLSEQISTAGTEASGTGNMKFMLNGALTIGTMDGANVEMAEAEAGEENFFIFGMRVED VDKLDQRGYNAQEYDRIPELRQVIEQLSSGFFSPKQPDLFKDIVNMLMHHDREFKVFADYEDYIKCQEKV SALYKNPREWTRMIRNIATSGKFSSDRTIAQYAREIWGVPSRQRLPAPDEAI</p> <p>TRTRPLEQKLISEEDLAANDILDYKDDDDKV</p>
Tag:	C-Myc/DDK
Predicted MW:	87.1 kDa
Concentration:	>0.05 µg/µL as determined by microplate BCA method
Purity:	> 80% as determined by SDS-PAGE and Coomassie blue staining
Buffer:	25 mM Tris-HCl, 100 mM glycine, pH 7.3, 10% glycerol
Preparation:	NULL or Add: Recombinant proteins was captured through anti-DDK affinity column followed by conventional chromatography steps.
Note:	For testing in cell culture applications, please filter before use. Note that you may experience some loss of protein during the filtration process.



[View online »](#)

Storage:	Store at -80°C.
Stability:	Stable for 12 months from the date of receipt of the product under proper storage and handling conditions. Avoid repeated freeze-thaw cycles.
RefSeq:	NP_001158188
Locus ID:	5837
UniProt ID:	P11217
Cytogenetics:	11q13.1
RefSeq ORF:	2262
Synonyms:	GSD5
Summary:	This gene encodes a muscle enzyme involved in glycogenolysis. Highly similar enzymes encoded by different genes are found in liver and brain. Mutations in this gene are associated with McArdle disease (myophosphorylase deficiency), a glycogen storage disease of muscle. Alternative splicing results in multiple transcript variants.[provided by RefSeq, Sep 2009]
Protein Families:	Druggable Genome
Protein Pathways:	Insulin signaling pathway, Starch and sucrose metabolism

Product images:



Coomassie blue staining of purified PYGM protein (Cat# TP328572). The protein was produced from HEK293T cells transfected with PYGM cDNA clone (Cat# [RC228572]) using MegaTran 2.0 (Cat# [TT210002]).