

Product datasheet for TP328526L

CHFR (NM_001161344) Human Recombinant Protein

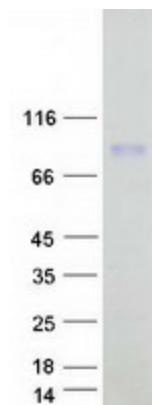
Product data:

Product Type:	Recombinant Proteins
Description:	Recombinant protein of human checkpoint with forkhead and ring finger domains (CHFR), transcript variant 1, 1 mg
Species:	Human
Expression Host:	HEK293T
Expression cDNA Clone or AA Sequence:	>RC228526 representing NM_001161344 Red =Cloning site Green =Tags(s)
	MERPEEGKQSPPPQPWGRLLRLGAEEGEPHVLLRKREWTIGRRRGCDLSFSPSNKLVSGDHCRIVVDEKSG QVTLEDTSTSGTVINKLKVVKKQTCPLQTGDVIYLVYRKNPEHNVAYLYESLSEKQGMTQESFEANKEN VFHGTKDTSAGAGRGADPRVPPSSPATQVCFEEPQPSTSTSDLFPTASASSTEPSPAGRERSSSCGSGG GGISPKGSGPSVASDEVSSFASALPDRKTASFSSLEPQDQEDLEPVKKKMRGDGDLNGLLVAQPRRN AQTVHEDVRAAAGKPKDMEETLTCIICDLLHDCVSLQPCMHTFCAACYSGWMERSSLCPTCRCPVERIC KNHILNNLVEAYLIQHPDKSRSEEDVQSM DARNKITQDMLQPKVRRSFSDEEGSSEDLLELSDVDSSESSD ISQPYVCRQCPEYRRQAAQPPHCPAPEGEPGAPQALGDAPSTSVSLTTAVQDYVCP LQGSHALCTCCFQ PMPDRRAEREQDPRVAPQQCAVCLQPFCHLYWGCTRTGCGCLAPFCELNLGDKCLDGV LNNNSYESDIL KNYLATRGLTWKNMLTESLVALQRGVFLLSDYRVTGDTVLCYCCGLRSFRELTYQYRQNIPASELPVAVT SRPDCYWGRNCRTQVKAHHAMKFNHICEQTRFKN
	TRTRPLEQKLISEEDLAANDILDYKDDDDKV
Tag:	C-Myc/DDK
Predicted MW:	73.2 kDa
Concentration:	>0.05 µg/µL as determined by microplate BCA method
Purity:	> 80% as determined by SDS-PAGE and Coomassie blue staining
Buffer:	25 mM Tris-HCl, 100 mM glycine, pH 7.3, 10% glycerol
Preparation:	NULL or Add: Recombinant proteins was captured through anti-DDK affinity column followed by conventional chromatography steps.
Note:	For testing in cell culture applications, please filter before use. Note that you may experience some loss of protein during the filtration process.
Storage:	Store at -80°C.



[View online »](#)

Stability:	Stable for 12 months from the date of receipt of the product under proper storage and handling conditions. Avoid repeated freeze-thaw cycles.
RefSeq:	NP_001154816
Locus ID:	55743
UniProt ID:	Q96EP1
Cytogenetics:	12q24.33
RefSeq ORF:	1992
Synonyms:	RNF116; RNF196
Summary:	This gene encodes an E3 ubiquitin-protein ligase required for the maintenance of the antepause checkpoint that regulates cell cycle entry into mitosis and, therefore, may play a key role in cell cycle progression and tumorigenesis. The encoded protein has an N-terminal forkhead-associated domain, a central RING-finger domain, and a cysteine-rich C-terminal region. Alternatively spliced transcript variants that encode different protein isoforms have been described. [provided by RefSeq, Mar 2014]
Protein Families:	Druggable Genome

Product images:

Coomassie blue staining of purified CHFR protein (Cat# [TP328526]). The protein was produced from HEK293T cells transfected with CHFR cDNA clone (Cat# [RC228526]) using MegaTran 2.0 (Cat# [TT210002]).