

## Product datasheet for TP328521L

### POU6F2 (NM\_001166018) Human Recombinant Protein

#### Product data:

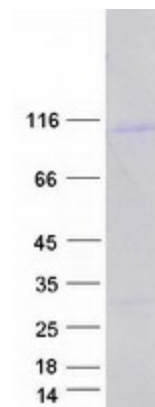
<b>Product Type:</b>	Recombinant Proteins
<b>Description:</b>	Purified recombinant protein of Homo sapiens POU class 6 homeobox 2 (POU6F2), transcript variant 2, 1 mg
<b>Species:</b>	Human
<b>Expression Host:</b>	HEK293T
<b>Expression cDNA Clone or AA Sequence:</b>	>RC228521 representing NM_001166018 <b>Red</b> =Cloning site <b>Green</b> =Tags(s)  MSALLQDPMIAGQVSKPLLSVRSEMNAELRGEDKAATSDSELNEPLLAPVESNDSSEDTPSKLFGARGNPA LSDPGTPDQH QASQTHPPFPVGPQPLLTAQQLASAVAGVMPGGPPALNQIPILIPFMAGQLGGQQGLVLT LPTANLTNIQGLVAAAAAGGIMTLPLQNLQATSSLNSQLQQQLQLLQQQQQQQQQPPSTNQHPQPAPQ APSQSQQQLQPTPPQQPPASQQPPAPTSQLQQAPQPQQHQPHSHSQNQNPSPPTQQSSSPPQKPSQSP GHGLPSPLTPPNPLQLVNNPLASQAAAAAAMSSIASQAFGNALSSLQGVGTGQLVTNAQGQIIGTIPLM PNPGPSSQAASGTQGLQVQPITPQLLTNAQGQIIATVIGNQILPVINTQGITLSPIKPGQQLHQPSQTSV GQAASQGNLLHLAHSQASMSQSPVRQASSSSSSSSSSALSQVGLVSNPQTAAGEVDGVLNLEEIREFAKA FKIRRLSLGLTQTQVGQALSATEGPAYSQSAICRFEKLDITPKSAQKIKPVLERWMAEAEARHRAGMQNL TEFIGSEPSKKRKRRTSFTPQALEILNAHFENKTHPSGQEMTEIAEKLNVDREVVRVWFCNKRQALKNTI KRLKQHEPATAVPLEPLTDSLEENS  <b>TRTRPLEQKLISEEDLAANDILDYKDDDDKV</b>
<b>Tag:</b>	C-Myc/DDK
<b>Predicted MW:</b>	69.1 kDa
<b>Concentration:</b>	>0.05 µg/µL as determined by microplate BCA method
<b>Purity:</b>	> 80% as determined by SDS-PAGE and Coomassie blue staining
<b>Buffer:</b>	25 mM Tris-HCl, 100 mM glycine, pH 7.3, 10% glycerol
<b>Preparation:</b>	NULL or Add: Recombinant proteins was captured through anti-DDK affinity column followed by conventional chromatography steps.
<b>Note:</b>	For testing in cell culture applications, please filter before use. Note that you may experience some loss of protein during the filtration process.
<b>Storage:</b>	Store at -80°C.



[View online »](#)

<b>Stability:</b>	Stable for 12 months from the date of receipt of the product under proper storage and handling conditions. Avoid repeated freeze-thaw cycles.
<b>RefSeq:</b>	<a href="#">NP_001159490</a>
<b>Locus ID:</b>	11281
<b>UniProt ID:</b>	<a href="#">P78424</a>
<b>Cytogenetics:</b>	7p14.1
<b>RefSeq ORF:</b>	1965
<b>Synonyms:</b>	RPF-1; WT5; WTSL
<b>Summary:</b>	This gene encodes a member of the POU protein family characterized by the presence of a bipartite DNA binding domain, consisting of a POU-specific domain and a homeodomain, separated by a variable polylinker. The DNA binding domain may bind to DNA as monomers or as homo- and/or heterodimers, in a sequence-specific manner. The POU family members are transcriptional regulators, many of which are known to control cell type-specific differentiation pathways. This gene is a tumor suppressor involved in Wilms tumor (WT) predisposition. Alternatively spliced transcript variants encoding distinct isoforms have been found for this gene. [provided by RefSeq, Oct 2009]
<b>Protein Families:</b>	Transcription Factors

### Product images:



Coomassie blue staining of purified POU6F2 protein (Cat# [TP328521]). The protein was produced from HEK293T cells transfected with POU6F2 cDNA clone (Cat# [RC228521]) using MegaTran 2.0 (Cat# [TT210002]).