

## Product datasheet for **TP328381**

### **FAM90A8 (NM\_001164450) Human Recombinant Protein**

#### Product data:

Product Type:	Recombinant Proteins
Description:	Recombinant protein of human family with sequence similarity 90, member A8 (FAM90A8), 20 µg
Species:	Human
Expression Host:	HEK293T
Expression cDNA Clone or AA Sequence:	>RC228381 representing NM_001164450 <b>Red</b> =Cloning site <b>Green</b> =Tags(s)
	<p>MMARRDPKSWAKRLVRAQTLQKQRRAPVGPSAPPDEEDPRLKCKNCGAFGHSTARSTRCPMKCWKAALVP ATLGKKEGKENLKPWKPRGEANPGPLNKDKGEKEERPRQQDPQRKALLHMFSGKPPEKPLPNGKGSTESS DHLRVASGMPVHTTSKRPRVDPVLADRSAAEMSGRGSVLASLSPLRKAASLSSSSSLGPKERQTGAAADI PQPAVRHQGRELLVVKPTHSRPEGGCREVPQAASKTHGLLQAARPQAQDKRPAVTSQPCPPAATHSLGL GSNLSFGPGAKRPAQAPIQACLNFPPKPKRLGPFQIPESAIQGGELGAPENLQPPPAATELG PSTSPQMGR RTPAQVPSIDRQPPHSTPCLPTAQACTMSHSAASHDGAQPLRVLFRRENGRWSSSLLAAPS FHSPEKP GAFLAQSPHVSEKSEAPCVRVPPSVLYEDLQVSSSSSEDSDSL</p> <p><b>TRTRPLEQKLISEEDLAANDILDYKDDDDKV</b></p>
Tag:	C-Myc/DDK
Predicted MW:	49.5 kDa
Concentration:	>0.05 µg/µL as determined by microplate BCA method
Purity:	> 80% as determined by SDS-PAGE and Coomassie blue staining
Buffer:	25 mM Tris-HCl, 100 mM glycine, pH 7.3, 10% glycerol
Preparation:	NULL or Add: Recombinant proteins was captured through anti-DDK affinity column followed by conventional chromatography steps.
Note:	For testing in cell culture applications, please filter before use. Note that you may experience some loss of protein during the filtration process.
Storage:	Store at -80°C.
Stability:	Stable for 12 months from the date of receipt of the product under proper storage and handling conditions. Avoid repeated freeze-thaw cycles.
RefSeq:	<u><a href="#">NP_001157922</a></u>



[View online »](#)

Locus ID: 441324

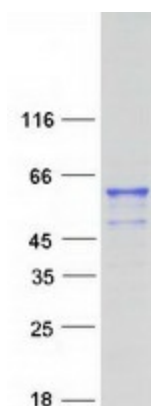
Cytogenetics: 8p23.1

RefSeq ORF: 1392

Synonyms: FAM90A8

**Summary:** FAM90A8 belongs to subfamily II of the primate-specific FAM90A gene family, which originated from multiple duplications and rearrangements (Bosch et al., 2007 [PubMed 17684299]). For background information on the FAM90A gene family, as well as information on the evolution of FAM90A genes, see FAM90A1 (MIM 613041).[supplied by OMIM, Oct 2009]

### Product images:



Coomassie blue staining of purified FAM90A8 protein (Cat# TP328381). The protein was produced from HEK293T cells transfected with FAM90A8 cDNA clone (Cat# [RC228381]) using MegaTran 2.0 (Cat# [TT210002]).