

## Product datasheet for **TP328342M**

### Alpha 2 Antiplasmin (SERPINF2) (NM\_001165921) Human Recombinant Protein

#### Product data:

Product Type:	Recombinant Proteins
Description:	Recombinant protein of human serpin peptidase inhibitor, clade F (alpha-2 antiplasmin, pigment epithelium derived factor), member 2 (SERPINF2), transcript variant 3, 100 µg
Species:	Human
Expression Host:	HEK293T
Expression cDNA	>RC228342 representing NM_001165921
Clone or AA Sequence:	Red=Cloning site Green=Tags(s)

MALLWGLLVLSWSC LQGPCSVFSPVSAMEPLGRQLTSGPNQEQVSPLTLLKLG NQVQPGAQNHTLQRLQQ  
VLHAGSGPCLPHLLSRLCQDLGPGAFRLAARMYLQKGFPIKEDFLEQSEQLF GAKPVS LTGKQEDDLANI  
NQWVKEATEGKIQEFLSGLPEDTVLLLLNAIHFQGFWRNKFDPSLTQRDSFHLDEQFTVPVEMMQARTYP  
LRWFLLEQPEIQVAHF PFKNMMSFVVLVPTHFEWNVSVQLANLSWDTLHPPLVWERPTKVRLPKLYLKHQ  
MDLVATLSQLGLQELFQAPDLRGISEQSLVSGVQHQSTLELSEVGVEAAAATSIAMSRMSLSSFVSNRP  
FLFFIFEDTTGLPLFVGSVRNPNPSAPRELKEQQDSPGNKDFLQSLKGFPRGDKLFGPDLKLVPPMEEDY  
PQFGSPK

TRTRPLEQKLISEEDLAANDILDYKDDDDKV

Tag:	C-Myc/DDK
Predicted MW:	45 kDa
Concentration:	>0.05 µg/µL as determined by microplate BCA method
Purity:	> 80% as determined by SDS-PAGE and Coomassie blue staining
Buffer:	25 mM Tris-HCl, 100 mM glycine, pH 7.3, 10% glycerol
Preparation:	Recombinant protein was captured through anti-DDK affinity column followed by conventional chromatography steps.
Note:	For testing in cell culture applications, please filter before use. Note that you may experience some loss of protein during the filtration process.
Storage:	Store at -80°C.
Stability:	Stable for 12 months from the date of receipt of the product under proper storage and handling conditions. Avoid repeated freeze-thaw cycles.



[View online »](#)

RefSeq: [NP\\_001159393](#)

Locus ID: 5345

UniProt ID: [P08697](#), [P08697-2](#)

Cytogenetics: 17p13.3

RefSeq ORF: 1281

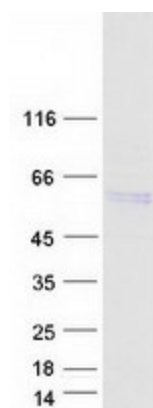
Synonyms: A2AP; AAP; ALPHA-2-PI; alpha2AP; API; PLI

**Summary:** This gene encodes a member of the serpin family of serine protease inhibitors. The protein is a major inhibitor of plasmin, which degrades fibrin and various other proteins. Consequently, the proper function of this gene has a major role in regulating the blood clotting pathway. Mutations in this gene result in alpha-2-plasmin inhibitor deficiency, which is characterized by severe hemorrhagic diathesis. Multiple transcript variants encoding different isoforms have been found for this gene. [provided by RefSeq, Sep 2009]

**Protein Families:** Druggable Genome, Secreted Protein

**Protein Pathways:** Complement and coagulation cascades

### Product images:



Coomassie blue staining of purified SERPINF2 protein (Cat# [TP328342]). The protein was produced from HEK293T cells transfected with SERPINF2 cDNA clone (Cat# [RC228342]) using MegaTran 2.0 (Cat# [TT210002]).