

Product datasheet for **TP328307M**

Sex Hormone Binding Globulin (SHBG) (NM_001146279) Human Recombinant Protein

Product data:

Product Type:	Recombinant Proteins
Description:	Recombinant protein of human sex hormone-binding globulin (SHBG), transcript variant 2, 100 µg
Species:	Human
Expression Host:	HEK293T
Expression cDNA Clone or AA Sequence:	>RC228307 representing NM_001146279 Red =Cloning site Green =Tags(s) MESRGPLATSRLLLLLLLLLLRHTRQGWALRPVLPQTSAHDPPAVHLSNGPGQEPIAVMTFDLTKITKTS SSFEVRTWDPEGVIFYGDTNPKDDWFMLGLRDGRPEIQLHNHWAQLTVGAGPRLDDGRWHQVEVKMEGDS VLEVDGEEVLRRLRQVSGPLTSKRHPIMRIALGGLLFPASNLRPAEISASAPTSRSCDVESNPGIFLP PGTQAEFNLRDIPQPHAEPWAFSLDLGLKQAAGSGHLLALGTPENPSWLSLHLQDQKVVLSGSGPGLDL PLVLGLPLQLKLSMSRVLSQGSMMKALAPPLGLAPLLNLWAKPQGRLFLGALPGEDSSTSFCNLNGLWA QGQRLDVDQALNRSHEIWTWSCPQSPGNGTDASH TRTRPLEQKLISEEDLAANDILDYKDDDDKV
Tag:	C-Myc/DDK
Predicted MW:	38.4 kDa
Concentration:	>0.05 µg/µL as determined by microplate BCA method
Purity:	> 80% as determined by SDS-PAGE and Coomassie blue staining
Buffer:	25 mM Tris-HCl, 100 mM glycine, pH 7.3, 10% glycerol
Preparation:	NULL or Add: Recombinant proteins was captured through anti-DDK affinity column followed by conventional chromatography steps.
Note:	For testing in cell culture applications, please filter before use. Note that you may experience some loss of protein during the filtration process.
Storage:	Store at -80°C.
Stability:	Stable for 12 months from the date of receipt of the product under proper storage and handling conditions. Avoid repeated freeze-thaw cycles.
RefSeq:	<u>NP_001139751</u>



[View online »](#)

Locus ID: 6462

UniProt ID: [P04278](#), [B0FWH2](#)

Cytogenetics: 17p13.1

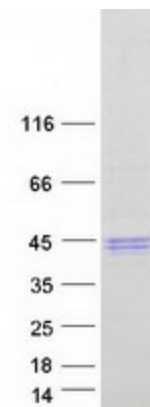
RefSeq ORF: 1152

Synonyms: ABP; SBP; TEBG

Summary: This gene encodes a steroid binding protein that was first described as a plasma protein secreted by the liver but is now thought to participate in the regulation of steroid responses. The encoded protein transports androgens and estrogens in the blood, binding each steroid molecule as a dimer formed from identical or nearly identical monomers. Polymorphisms in this gene have been associated with polycystic ovary syndrome and type 2 diabetes mellitus. Alternative splicing results in multiple transcript variants. [provided by RefSeq, Jan 2014]

Protein Families: Druggable Genome, Secreted Protein

Product images:



Coomassie blue staining of purified SHBG protein (Cat# [TP328307]). The protein was produced from HEK293T cells transfected with SHBG cDNA clone (Cat# [RC228307]) using MegaTran 2.0 (Cat# [TT210002]).