

## Product datasheet for **TP328130**

### SFTPA1 (NM\_001164646) Human Recombinant Protein

#### Product data:

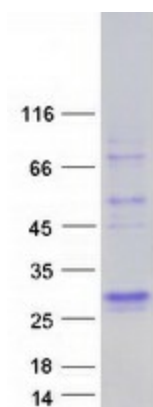
Product Type:	Recombinant Proteins
Description:	Purified recombinant protein of Homo sapiens surfactant protein A1 (SFTPA1), transcript variant 6, 20 µg
Species:	Human
Expression Host:	HEK293T
Expression cDNA Clone or AA Sequence:	>RC228130 representing NM_001164646 <b>Red</b> =Cloning site <b>Green</b> =Tags(s)
	 MWLCPLALNLILMAASGAVCEVKDVCVGTGPIGGECGEKGEPPERGERGPPGLPAHLDEELQATLHDFRHQIL QTRGALS LQGSIMTVGEKVFSSNGQSITFDAIQEACARAGGRIAVPRNPEENEAIASFVKKYNTYAYVGL TEGSPSGDFRYS DGTVPVNYTNWYRGEPAGRGKEQC VEMYTDGQW NDRNCLYSRLTICEF  <b>TRTRPLEQKLISEEDLAANDILDYKDDDDKV</b>
Tag:	C-Myc/DDK
Predicted MW:	21.5 kDa
Concentration:	>0.05 µg/µL as determined by microplate BCA method
Purity:	> 80% as determined by SDS-PAGE and Coomassie blue staining
Buffer:	25 mM Tris-HCl, 100 mM glycine, pH 7.3, 10% glycerol
Preparation:	NULL or Add: Recombinant proteins was captured through anti-DDK affinity column followed by conventional chromatography steps.
Note:	For testing in cell culture applications, please filter before use. Note that you may experience some loss of protein during the filtration process.
Storage:	Store at -80°C.
Stability:	Stable for 12 months from the date of receipt of the product under proper storage and handling conditions. Avoid repeated freeze-thaw cycles.
RefSeq:	<u><a href="#">NP_001158118</a></u>
Locus ID:	653509
UniProt ID:	<u><a href="#">Q8IWL2</a></u>



[View online »](#)

Cytogenetics:	10q22.3
RefSeq ORF:	597
Synonyms:	COLEC4; PSAP; PSP-A; PSPA; SFTP1; SFTPA1B; SP-A; SP-A1; SP-A1 beta; SP-A1 delta; SP-A1 epsilon; SP-A1 gamma; SPA; SPA1
Summary:	This gene encodes a lung surfactant protein that is a member of a subfamily of C-type lectins called collectins. The encoded protein binds specific carbohydrate moieties found on lipids and on the surface of microorganisms. This protein plays an essential role in surfactant homeostasis and in the defense against respiratory pathogens. Mutations in this gene are associated with idiopathic pulmonary fibrosis. Alternate splicing results in multiple transcript variants. [provided by RefSeq, May 2010]

### Product images:



Coomassie blue staining of purified SFTPA1 protein (Cat# TP328130). The protein was produced from HEK293T cells transfected with SFTPA1 cDNA clone (Cat# [RC228130]) using MegaTran 2.0 (Cat# [TT210002]).