

## Product datasheet for **TP328125**

### FHL1 (NM\_001159703) Human Recombinant Protein

#### Product data:

Product Type:	Recombinant Proteins
Description:	Purified recombinant protein of Homo sapiens four and a half LIM domains 1 (FHL1), transcript variant 6, 20 µg
Species:	Human
Expression Host:	HEK293T
Expression cDNA Clone or AA Sequence:	>RC228125 representing NM_001159703 <b>Red</b> =Cloning site <b>Green</b> =Tags(s)

MAEKFDCHYCRDPLQGKKYVQKDGHHCLCKCFDKFCANTCVECCKPIGADSKEVHYKNRFWHDTCFRCAK  
CLHPLANETFVAKDNKILCNKCTTREDSPKCKGCFKAIVAGDQNVYKGTVWHKDCFTCSNCKQVIGTGS  
FFPKGEDFYCVTCHETKFAKHCVKCNKGLVKAPVWWPMKDNPGTTTASTAKNAP

**TRTRPLEQKLISEEDLAANDILDYKDDDDKV**

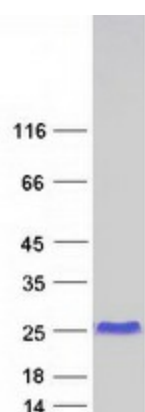
Tag:	C-Myc/DDK
Predicted MW:	21.8 kDa
Concentration:	>0.05 µg/µL as determined by microplate BCA method
Purity:	> 80% as determined by SDS-PAGE and Coomassie blue staining
Buffer:	25 mM Tris-HCl, 100 mM glycine, pH 7.3, 10% glycerol
Preparation:	NULL or Add: Recombinant proteins was captured through anti-DDK affinity column followed by conventional chromatography steps.
Note:	For testing in cell culture applications, please filter before use. Note that you may experience some loss of protein during the filtration process.
Storage:	Store at -80°C.
Stability:	Stable for 12 months from the date of receipt of the product under proper storage and handling conditions. Avoid repeated freeze-thaw cycles.
RefSeq:	<a href="#">NP_001153175</a>
Locus ID:	2273
UniProt ID:	<a href="#">Q13642</a>



[View online »](#)

Cytogenetics:	Xq26.3
RefSeq ORF:	582
Synonyms:	FCMSU; FHL-1; FHL1A; FHL1B; FLH1A; KYOT; RBMX1A; RBMX1B; SLIM; SLIM-1; SLIM1; SLIMMER; XMPMA
Summary:	This gene encodes a member of the four-and-a-half-LIM-only protein family. Family members contain two highly conserved, tandemly arranged, zinc finger domains with four highly conserved cysteines binding a zinc atom in each zinc finger. Expression of these family members occurs in a cell- and tissue-specific mode and these proteins are involved in many cellular processes. Mutations in this gene have been found in patients with Emery-Dreifuss muscular dystrophy. Multiple alternately spliced transcript variants which encode different protein isoforms have been described.[provided by RefSeq, Nov 2009]

### Product images:



Coomassie blue staining of purified FHL1 protein (Cat# TP328125). The protein was produced from HEK293T cells transfected with FHL1 cDNA clone (Cat# [RC228125]) using MegaTran 2.0 (Cat# [TT210002]).