

## Product datasheet for **TP328120M**

### **RAB37 (NM\_001163990) Human Recombinant Protein**

#### Product data:

Product Type:	Recombinant Proteins
Description:	Purified recombinant protein of Homo sapiens RAB37, member RAS oncogene family (RAB37), transcript variant 5, 100 µg
Species:	Human
Expression Host:	HEK293T
Expression cDNA Clone or AA Sequence:	>RC228120 representing NM_001163990 <b>Red</b> =Cloning site <b>Green</b> =Tags(s)
	 MTGTPGAVATRDGEAPERSPPCSPSYDLTGKNKVTVTDGVRVKLQIWDTAGQERFRSVTHAYYRDAQALL LLYDITNKSSFDNIRAWLTEIHEYAQRDVVIMLLGNKADMSSSERVIRSEGETLAREYGVPPFLESAKTG MNVELAFLAIKELKYRAGHQADEPSFQIRDYVESQKKRSSCCSFM  <b>TRTRPLEQKLISEEDLAANDILDYKDDDDKV</b>
Tag:	C-Myc/DDK
Predicted MW:	20.7 kDa
Concentration:	>0.05 µg/µL as determined by microplate BCA method
Purity:	> 80% as determined by SDS-PAGE and Coomassie blue staining
Buffer:	25 mM Tris-HCl, 100 mM glycine, pH 7.3, 10% glycerol
Preparation:	NULL or Add: Recombinant proteins was captured through anti-DDK affinity column followed by conventional chromatography steps.
Note:	For testing in cell culture applications, please filter before use. Note that you may experience some loss of protein during the filtration process.
Storage:	Store at -80°C.
Stability:	Stable for 12 months from the date of receipt of the product under proper storage and handling conditions. Avoid repeated freeze-thaw cycles.
RefSeq:	<u><a href="#">NP_001157462</a></u>
Locus ID:	326624
UniProt ID:	<u><a href="#">Q96AX2</a></u>



[View online »](#)

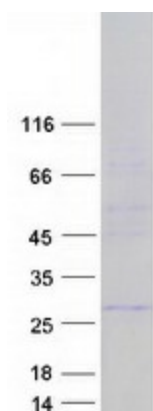
Cytogenetics: 17q25.1

RefSeq ORF: 558

**Summary:** Rab proteins are low molecular mass GTPases that are critical regulators of vesicle trafficking. For additional background information on Rab proteins, see MIM 179508.[supplied by OMIM, Apr 2006]

**Protein Families:** Druggable Genome, Secreted Protein

### Product images:



Coomassie blue staining of purified RAB37 protein (Cat# [TP328120]). The protein was produced from HEK293T cells transfected with RAB37 cDNA clone (Cat# [RC228120]) using MegaTran 2.0 (Cat# [TT210002]).