

Product datasheet for **TP328080L**

RPS20 (NM_001146227) Human Recombinant Protein

Product data:

Product Type:	Recombinant Proteins
Description:	Recombinant protein of human ribosomal protein S20 (RPS20), transcript variant 1, 1 mg
Species:	Human
Expression Host:	HEK293T
Expression cDNA Clone or AA Sequence:	>RC228080 representing NM_001146227 Red=Cloning site Green=Tags(s)
	MAFKDTGKTPVEPEVAIHRIRITLTSRNVKSLEKVCADLIRGAKEKNLKVGPVRMPTKTLRITRTPC GEGSKTWDRFQMRIHKRLIDLHSPSEIVKQITSISIEPGVELIESTDAEPMDEGQQYTLRSVFESPGTC PF
	TRTRPLEQKLISEEDLAANDILDYKDDDDKV
Tag:	C-Myc/DDK
Predicted MW:	15.8 kDa
Concentration:	>0.05 µg/µL as determined by microplate BCA method
Purity:	> 80% as determined by SDS-PAGE and Coomassie blue staining
Buffer:	25 mM Tris-HCl, 100 mM glycine, pH 7.3, 10% glycerol
Preparation:	NULL or Add: Recombinant proteins was captured through anti-DDK affinity column followed by conventional chromatography steps.
Note:	For testing in cell culture applications, please filter before use. Note that you may experience some loss of protein during the filtration process.
Storage:	Store at -80°C.
Stability:	Stable for 12 months from the date of receipt of the product under proper storage and handling conditions. Avoid repeated freeze-thaw cycles.
RefSeq:	NP_001139699
Locus ID:	6224
UniProt ID:	P60866
Cytogenetics:	8q12.1



[View online »](#)

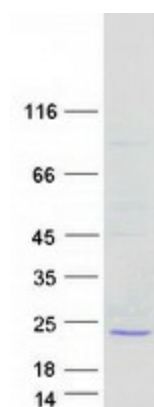
RefSeq ORF: 426

Synonyms: S20; uS10

Summary: Ribosomes, the organelles that catalyze protein synthesis, consist of a small 40S subunit and a large 60S subunit. Together these subunits are composed of 4 RNA species and approximately 80 structurally distinct proteins. This gene encodes a ribosomal protein that is a component of the 40S subunit. The protein belongs to the S10P family of ribosomal proteins. It is located in the cytoplasm. This gene is co-transcribed with the small nucleolar RNA gene U54, which is located in its second intron. As is typical for genes encoding ribosomal proteins, there are multiple processed pseudogenes of this gene dispersed through the genome. Two transcript variants encoding different isoforms have been identified for this gene. [provided by RefSeq, Apr 2009]

Protein Pathways: Ribosome

Product images:



Coomassie blue staining of purified RPS20 protein (Cat# [TP328080]). The protein was produced from HEK293T cells transfected with RPS20 cDNA clone (Cat# [RC228080]) using MegaTran 2.0 (Cat# [TT210002]).