

## Product datasheet for TP328058L

### LOC728392 (NM\_001162371) Human Recombinant Protein

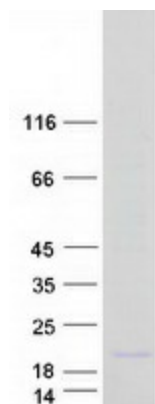
#### Product data:

Product Type:	Recombinant Proteins
Description:	Recombinant protein of human hypothetical protein LOC728392 (LOC728392), 1 mg
Species:	Human
Expression Host:	HEK293T
Expression cDNA Clone or AA Sequence:	>RC228058 representing NM_001162371 <div> <div>Red</div>=Cloning site <div>Green</div>=Tags(s) </div> <p>MADGLFRRRPWGLEQIRPDPESEGLFDKPPPEDPPAARGPRASAAAGKKAGRRAGGRAQGGGRAGQPPKA  A  SRPPPKKEAPPLDEGCYLDHFPHLISIFIYAAIAFSITSCIFTYIHLQLA</p> <p><div>TR</div><div>TRPLEQKLISEEDLAANDILDYKDDDDKV</div></p>
Tag:	C-Myc/DDK
Predicted MW:	12.7 kDa
Concentration:	>0.05 µg/µL as determined by microplate BCA method
Purity:	> 80% as determined by SDS-PAGE and Coomassie blue staining
Buffer:	25 mM Tris-HCl, 100 mM glycine, pH 7.3, 10% glycerol
Preparation:	NULL or Add: Recombinant proteins was captured through anti-DDK affinity column followed by conventional chromatography steps.
Note:	For testing in cell culture applications, please filter before use. Note that you may experience some loss of protein during the filtration process.
Storage:	Store at -80°C.
Stability:	Stable for 12 months from the date of receipt of the product under proper storage and handling conditions. Avoid repeated freeze-thaw cycles.
RefSeq:	<a href="#">NP_001155843</a>
Locus ID:	728392
UniProt ID:	<a href="#">A0A494C111</a>
Cytogenetics:	17p13.2


[View online »](#)

RefSeq ORF: 357

### Product images:



Coomassie blue staining of purified LOC728392 protein (Cat# [TP328058]). The protein was produced from HEK293T cells transfected with LOC728392 cDNA clone (Cat# [RC228058]) using MegaTran 2.0 (Cat# [TT210002]).