

Product datasheet for **TP328023M**

Small integral membrane protein 6 (SMIM6) (NM_001162997) Human Recombinant Protein

Product data:

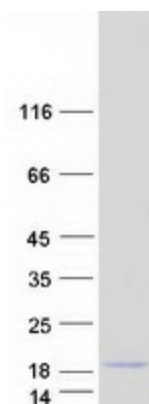
Product Type:	Recombinant Proteins
Description:	Recombinant protein of human hypothetical protein LOC100130933 (LOC100130933), 100 µg
Species:	Human
Expression Host:	HEK293T
Expression cDNA Clone or AA Sequence:	>RC228023 representing NM_001162997 Red =Cloning site Green =Tags(s)
	MDQLVFKETIWNDAFWQNPWDQGGLAVIILFITAVLLLILFAIVFGLLTSTENTQCEAGEEE
	TRTRPLEQKLISEEDLAANDILDYKDDDDKV
Tag:	C-Myc/DDK
Predicted MW:	6.8 kDa
Concentration:	>0.05 µg/µL as determined by microplate BCA method
Purity:	> 80% as determined by SDS-PAGE and Coomassie blue staining
Buffer:	25 mM Tris-HCl, 100 mM glycine, pH 7.3, 10% glycerol
Preparation:	NULL or Add: Recombinant proteins was captured through anti-DDK affinity column followed by conventional chromatography steps.
Note:	For testing in cell culture applications, please filter before use. Note that you may experience some loss of protein during the filtration process.
Storage:	Store at -80°C.
Stability:	Stable for 12 months from the date of receipt of the product under proper storage and handling conditions. Avoid repeated freeze-thaw cycles.
RefSeq:	NP_001156469
Locus ID:	100130933
UniProt ID:	P0DI80
Cytogenetics:	17q25.1
RefSeq ORF:	186



[View online »](#)

Synonyms: C17orf110; ELN

Product images:



Coomassie blue staining of purified SMIM6 protein (Cat# [TP328023]). The protein was produced from HEK293T cells transfected with SMIM6 cDNA clone (Cat# [RC228023]) using MegaTran 2.0 (Cat# [TT210002]).